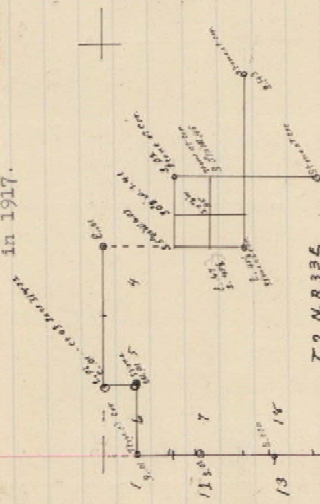


**S K E T C H**

Showing course and distance from True Corners to Witness Corners, as placed in the Resurvey of Boundaries and Subdivisional lines, of the DIMINISHED UMATILLA INDIAN RESERVATION,

by L. E. Wilkes, U. S. Surveyor, in 1917.

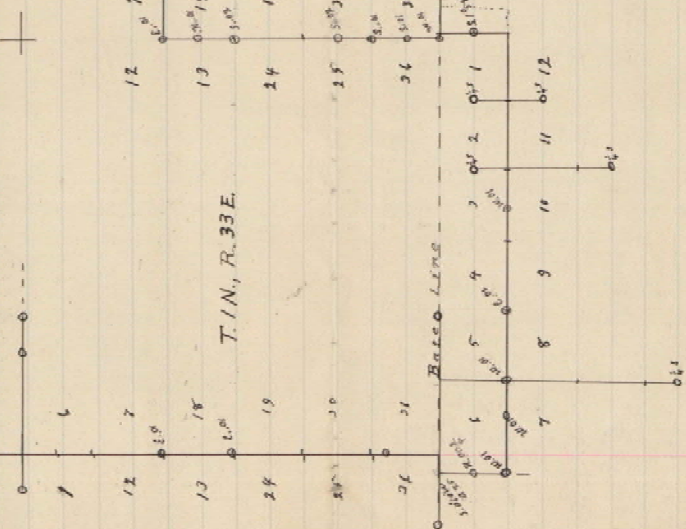


T. 2 N., R. 33 E.

T. 2 N., R. 34 E.

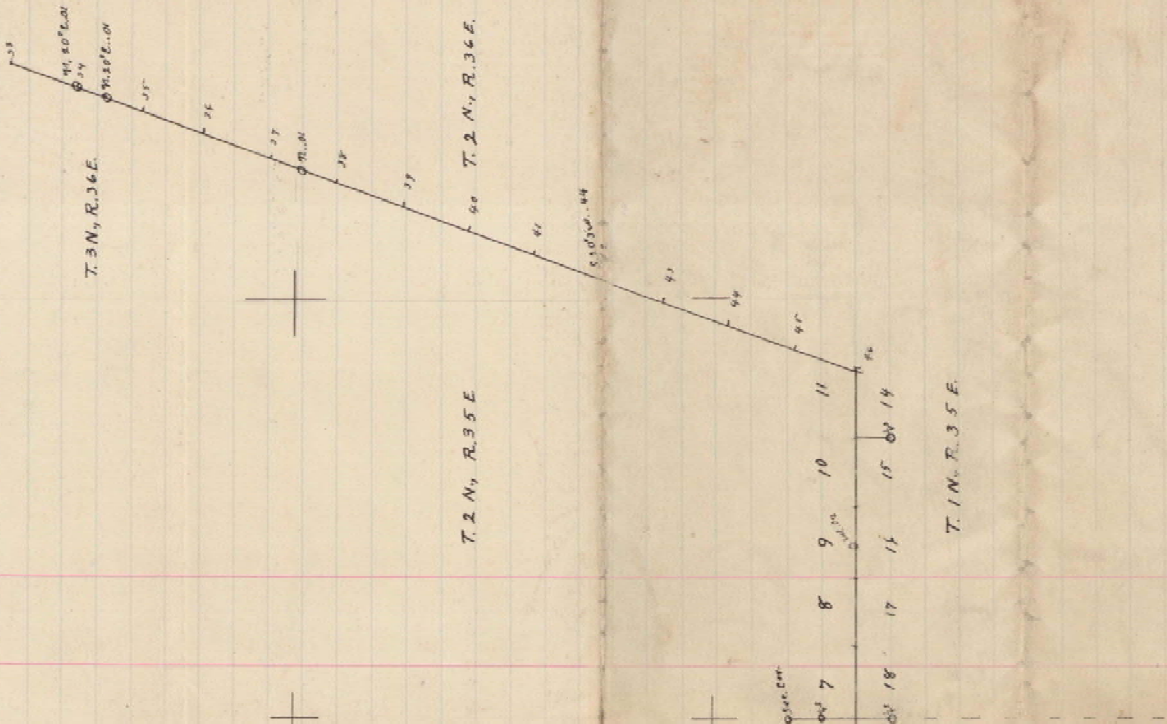
Note - Along West Boundary of Tps. 1 and 2 North, Range 33 East, where not otherwise noted are placed at 30 feet east, or west of true corner point.

o Indicates, stone at true corner point.



T. 1 N., R. 33 E.

T. 1 N., R. 34 E.



T. 2 N., R. 35 E.

T. 2 N., R. 35 E.

T. 2 N., R. 36 E.

T. 1 N., R. 35 E.