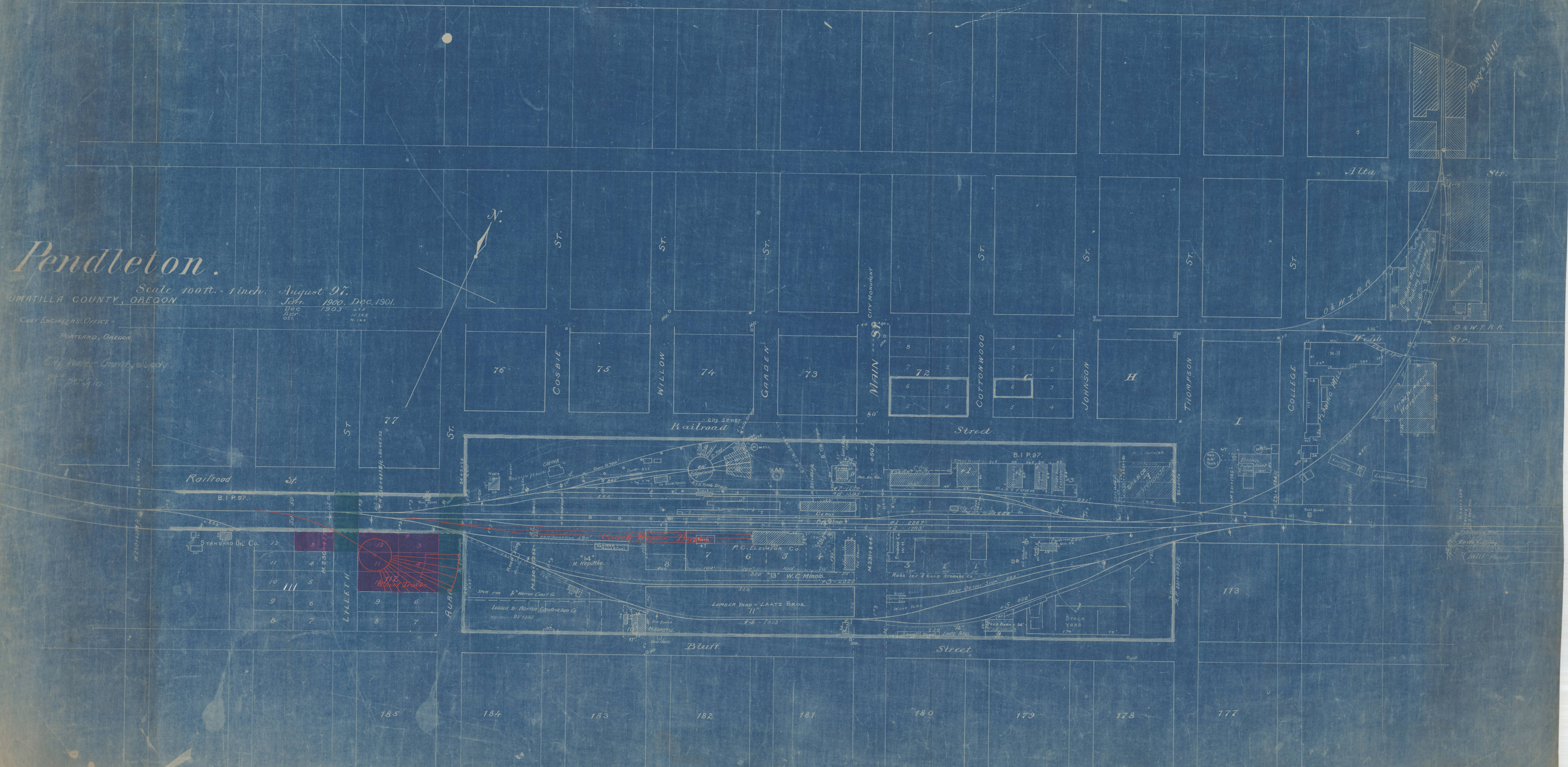


Pendleton.

Scale 100ft. = 1 inch. August 91.
UMATILLA COUNTY, OREGON. Jan. 1900. Dec. 1901.

CHIEF ENGINEER'S OFFICE
PORTLAND, OREGON.
CITY WATER GRANT SURVEY
Dec. 910

DEC 1903
APR 1905
OCT 1905



Railroad
B.I.P. 97.

STANDARD OIL Co.

12	5
11	4
10	3
9	6
8	7



AUAR

CHINA
H. Kopitke
P.C. DEWITT Co.
W.C. Minnis
LUMBER YARD - LAATZ BROS.
STOCK YARD

113

185

184

183

182

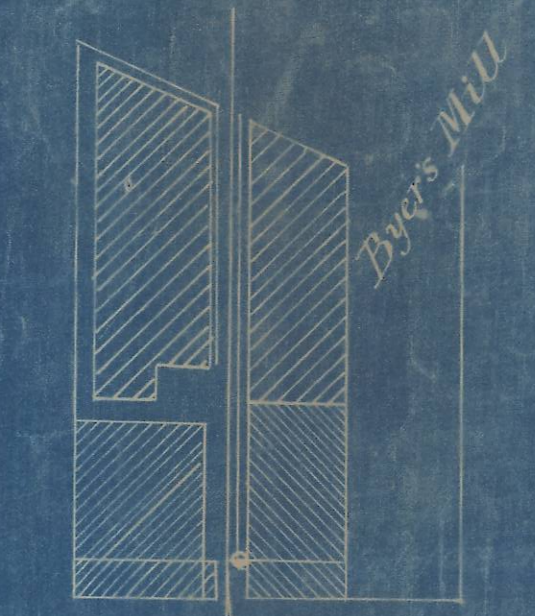
181

180

179

178

177



Alta

Str.

High

Str.

COLLEGE

Abing Mill

Lumber Yard

Mill Pond