

# O.W.R.&N.CO. COE DAM, PROPERTY,

FORMERLY

## FURNISH RESERVOIR

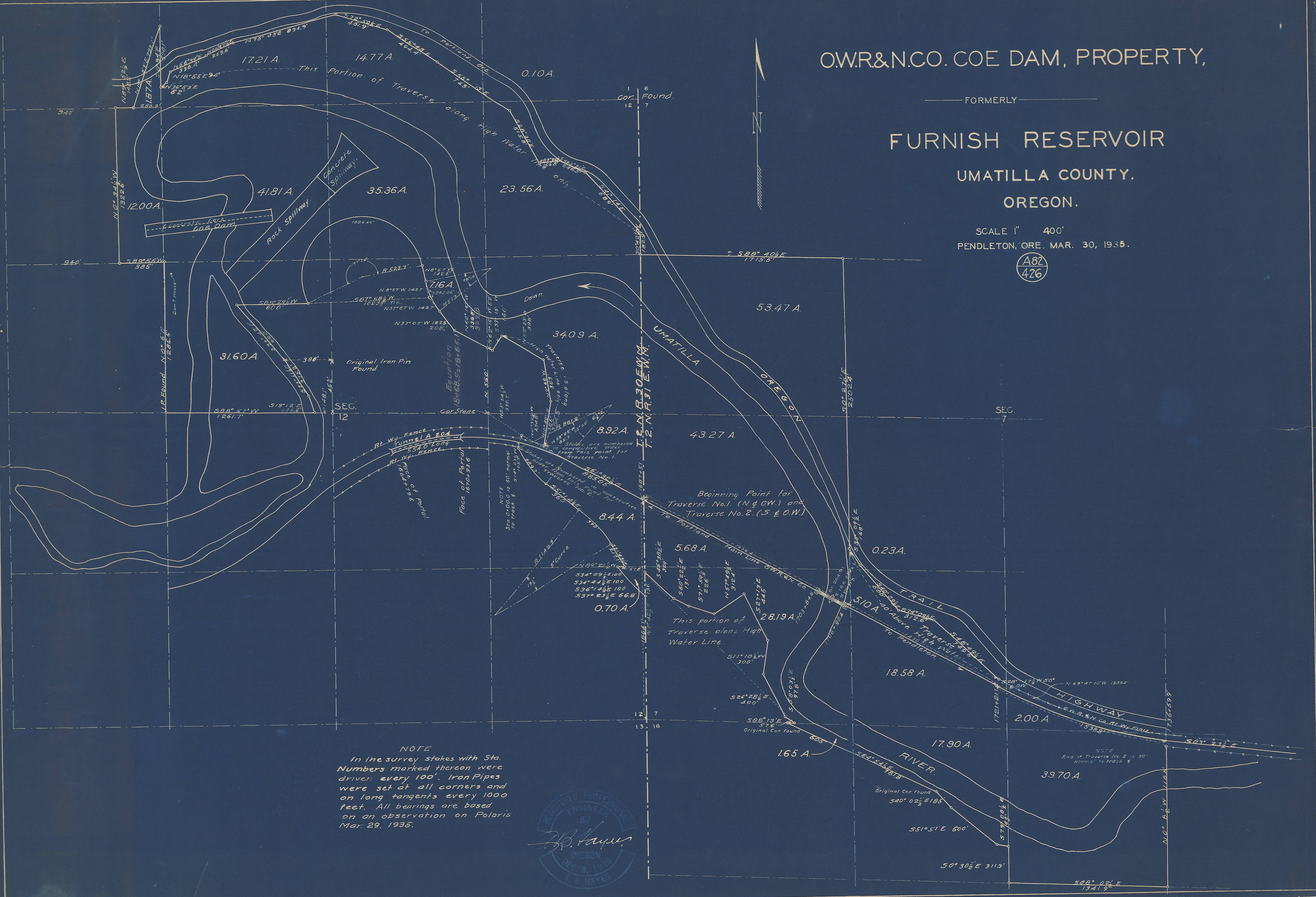
UMATILLA COUNTY,

OREGON.

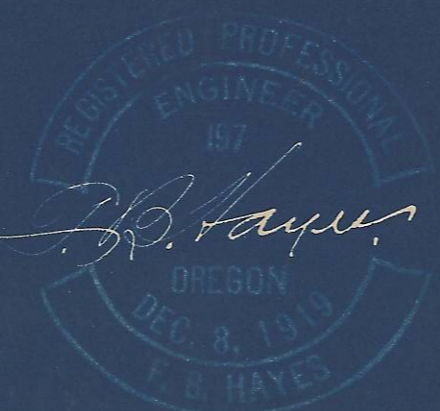
SCALE 1" = 400'

PENDLETON, ORE. MAR. 30, 1935.

A82  
426



NOTE  
In the survey stakes with Sta. Numbers marked thereon were driven every 100'. Iron Pipes were set at all corners and on long tangents every 1000 feet. All bearings are based on an observation on Polaris Mar. 29, 1935.



NOTE  
End of Traverse No. 2 is 30' normal to track E