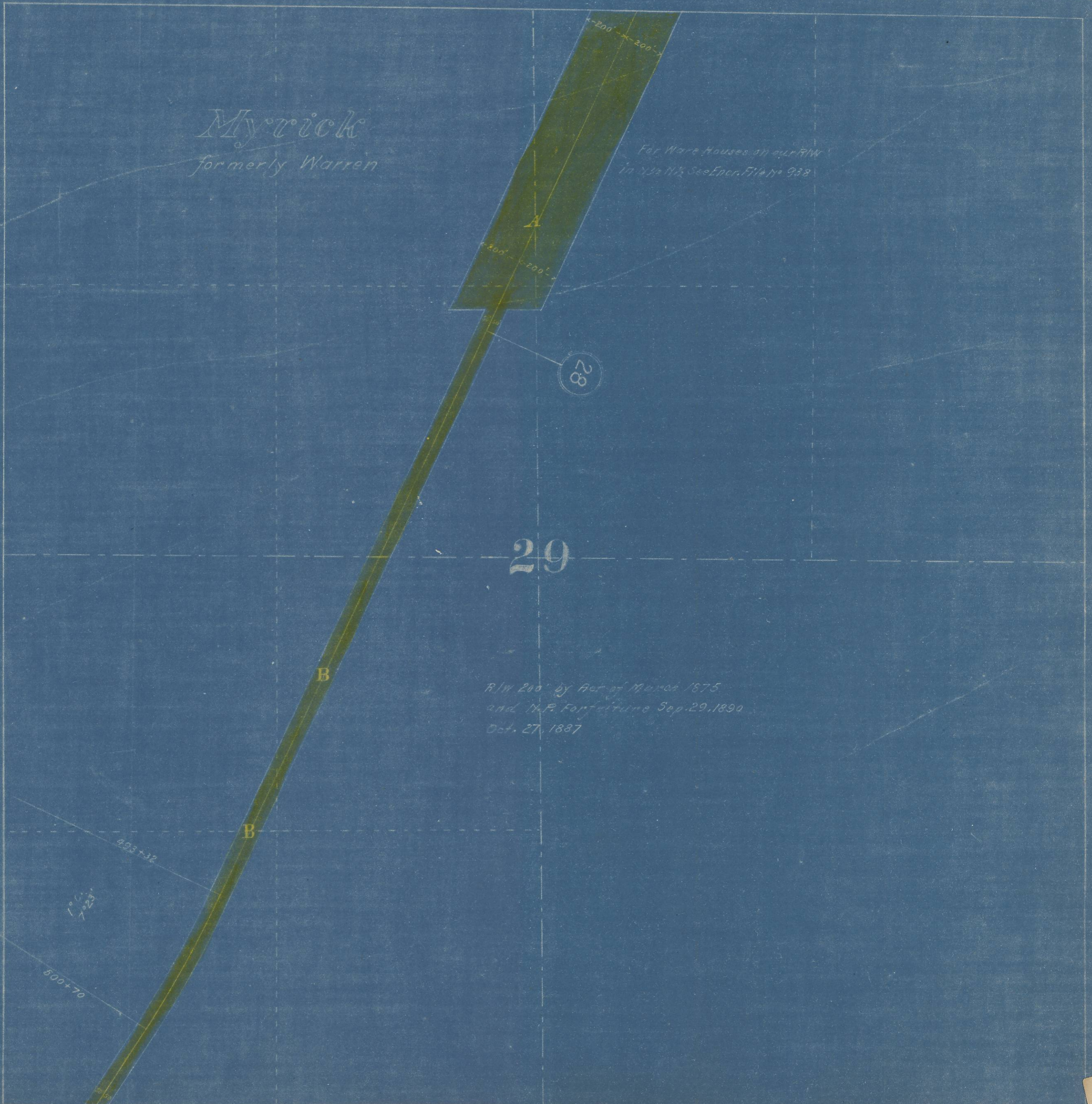


N.P.R.
Wallula to Pendleton Right of Way Plat
State of Oregon County of Umatilla
Sec. 29 Township 4 N. Range 33 E. of Willamette Meridian

Scale 400 Ft. 1 Inch.

Note: Boundary of Right of Way denoted thus -----



Myrick
formerly Warren

For Ware Houses on our R/W
in 1/2 1/2 See Encl. File No 938

28

29

R/W 200' by Act of March 1875
and N.P. Forfeiture Sep. 29, 1890
Oct. 27, 1887

B

B

100
7+29'

500+70

493+32

200' 200'

200' 200'