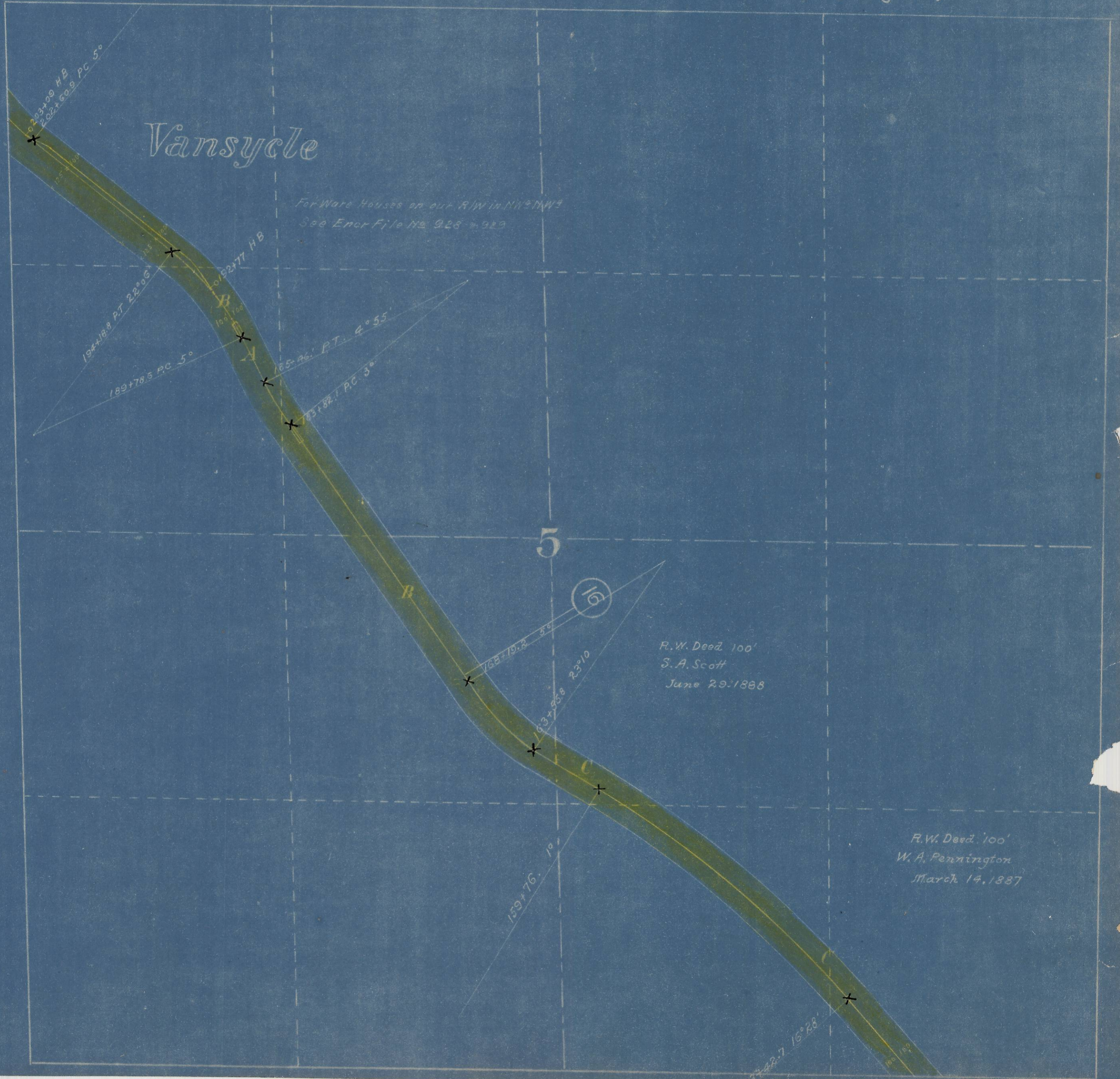


N.P.R.

Wallula to Pendleton Right of Way Plat
State of Oregon County of Umatilla
Sec 5 Township 5 N. Range 33 E. of Willamette Meridian

Scale 400 ft. = 1 Inch

Note: Boundary of Right of Way denoted thus.....



Vansycle

For Ware Houses on out R/W in NW 2 NW 3
See Encr File No 928 & 929

5

R.W. Deed 100'
S.A. Scott
June 29, 1888

R.W. Deed 100'
W.A. Pennington
March 14, 1887

233+29 HB
202+60.9 PC 5°

194+18.8 PT 22°06' 1/2

189+78.5 PC 5°

107+52.77 HB

65+46.1 PT 4°55'

43+82.1 PC 3°

16

168+19.2 5°

163+85.8 23°10'

159+76.1 19°

142+7 16°28'