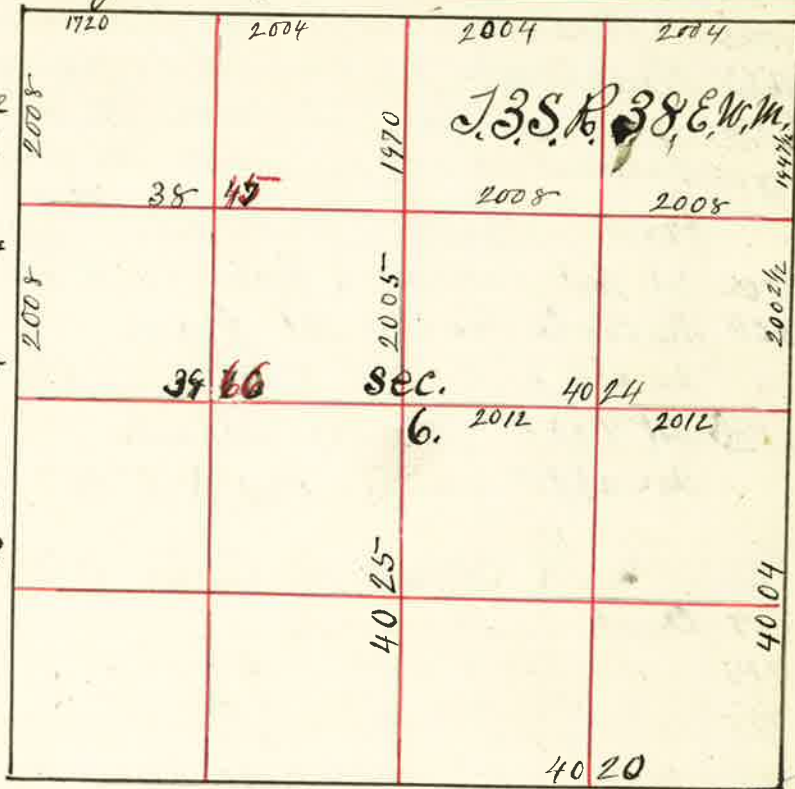


Surveyed for Summer of Baker Per. Miller Bros. June 12th 1889

By J.W. Kimbrell County Surveyor Plat No. 82.

I commenced at the corner to Sec 5=6=31 1/2 32 thence west var 24 1/2° E.

1069 fence N & S
2000 Set Post for Temporary 1/8 corner
2005 fence
2525 creek 25 lks wide course S & E.
4000 Set Post for Temporary 1/4 Sec. cor.
5100 Rail Road S 47° E
6000 Set Stake for Temporary 1/2 cor
7732 The corner to Sec 1=6=31 1/2 36 and 1/2 28 1/2 3
S Ranges 37 & 38 E
A Stone 6 x 10 x 22 from which
A Pine 24 in bro N 65° E 182 lks
Old Pine Stump 24 " S 55° E 465 "
A Pine 5 in bro S 51° E 370 "
from which I run East var 20° E.



1720 Set Post for 1/8 corner
3724 Set Stone 6 x 12 x 25 inches marked 1/4 for 1/4 Sec. cor. bet Sec 6 & 31
5728 " " 6 x 8 x 29 " " 1/2 " 1/2 corners.
7732 The corner to Sec 5=6=31 1/2 32 thence South
1945 Set Temporary 1/8 corner
3950 the 1/4 Sec. corner bet Sec 5 & 6 making an excess of 5 lks on U.S. & N. & S.
I therefore run North on same line
2002 1/2 Set Post for 1/2 cor
3950 The corner to Sec 5=6=31 1/2 31 the 1/4 Sec. corner on North Boundary Sec. 6 thence South var 20° E.
1000 Rail Road S 47° E
1977 Set Post for Temporary 1/16 corner in center N 1/2 Sec 6
3986 " " " " " " 1/16 cor. in center Sec. 6.
8000 I intersect South Boundary 69 lks west of 1/4 Sec. corner bet Sec 6 & 7 the corner to Sec 1=6=31 1/2 36 and T 28 1/2 38 B 37 1/2 38 E. thence South var 20° E.
2000 Set Temporary 1/8 corner
4016 I intersect 1/4 Sec. cor. 37 lks East of 1/4 Sec. cor. from which a Pine 24 inches bro S 85° E 168 lks from which I run

North bet Sec 1 & 6, var 20° E
2008 Set Stake for 1/8 corner marked 1/8 on East Slope of Mountain
4016 The corner to Sec 1=6=31 1/2 36. The 1/4 Sec. corner bet Sec 5 & 6 then a west through east
720 Rail Road S 47° E
1435 creek S. E.
2000 Set Stone for Temporary 1/16 cor
3523 wire fence N. & S.
4024 the center Sec 6
7904 the 1/4 Sec. cor. on west boundary Sec 6
7990 the 1/8 corner on East boundary N. E. 1/4 Sec. 6
thence west var 19° 45' E
965 Creek 10 lks wide runs South
2070 Set Post for Temporary 1/16 cor. in center N & 1/4
1965 2065 fence runs N & S
2525 2025 Rail Road S 47° E
3342 3042 picket fence N & S A. Sanglaff's Orchard
3987 3987 live Orchard, & Garden
4014 the center N 1/2 Sec. 6.
7854 the 1/8 corner on west boundary N. W. 1/4 Sec. 6 from which I run East
3859 Set Stone 6 x 10 x 23 inches in Co Road for 1/16 cor. center N 1/2 the 1/16 corner in center E 1/2 Sec 6 thence North var 20° E
460 creek S & E
1556 Rail Road runs S. 47° E
2004 I intersect E & W line 71 lks west of 1st Stake at this Point
2750 fence E & W
2958 pole fence E & W
3025 creek East
3050 Rail fence S E & N W
3800 Creek S E
3350 " S W
3415 " S E.
3968 I intersect North Boundary 19 lks East of 1/8 corner from which I run South on same line
1964 Set Stone 6 x 9 x 17 for 1/16 corner in center N & 1/4 Sec. 6
J.W. Kimbrell County Surveyor