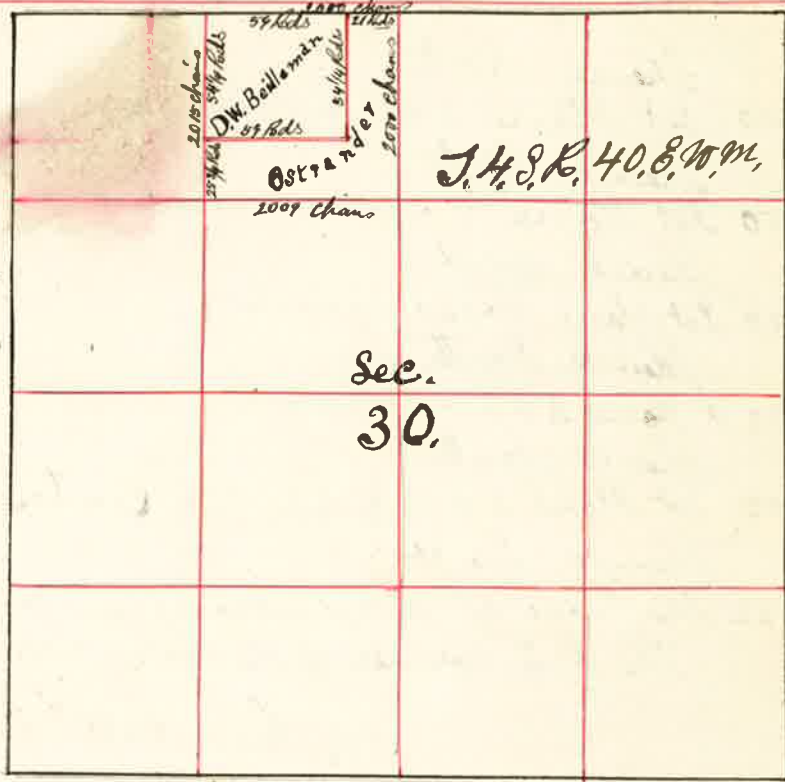


Surveyed for Dan Beidleman & Ostrander April 5 1889  
by W. Kimball County Surveyor Plat No. 74

I Commenced at the  
NW corner of Sec 30  
thence South on Guide  
Meridian var 20° E  
2000 Set temporary stake for 1/8 corer  
4000 Set temporary 1/4 sec corner.  
Old corner out of place  
8000 found no Sec. corer  
thence South  
4000 found no 1/4 sec. corner  
8115 the Transp/corner  
to T. 48.5, S. 16, R. 39.8, 40.  
East or W.  
making an excess  
of 115 lks over U.S.  
Field Notes,



I therefore run North var 20° E. and at  
8057 Set Stone 10 x 10 x 30 inch in mound of Stone on North side  
of Mountain slope 50 lks North of R. R. track.  
from this corner I run East var 19° E  
4000 found no 1/4 Sec corer  
8023 Intersect East boundary 97 lks South of corer to Sec 29-30-31 & 32  
from which I run West var 20° E  
4012 Set Stake for 1/4 Sec corer  
The 1/4 Sec corer on North boundary Sec 30 thence var 20° E  
2000 Set temporary 1/6 corer  
4000 Set " stake for center Sec 30  
8061 Intersect South boundary 92 lks East of 1/4 Sec corer  
the 1/4 Sec corer on East boundary Sec 30  
thence West var 20° E  
4028 Intersect N & S line 15 lks North of center  
8024 West boundary Sec. 30  
I then started at the 1/4 Sec corer on North boundary Sec 30

Surveyed for Beidleman & Ostrander for 5 1889

and run South  
2000 Set Stone 8 x 6 x 27 for center N 1/2 Sec 30  
thence West  
2009 Set Stone 7 x 8 x 18 inches for center NW 1/4 Sec 30  
the 1/8 corner on North boundary NW 1/4 Sec 30  
thence South var 20° E  
1306 1/4 Set Stone 3 x 9 x 18 inches corner No. 1.  
thence East  
1475 Set Stone 3 x 8 x 19 inches corner No. 2.  
thence North  
1306 1/4 Set Stone 3 x 12 x 18 inches corner No. 3  
thence West  
1475 to Place of Beginning corner No 4 which is  
Included in the Beidleman tract about 20 acres.  
The Ostrander tract is described as follows to wit:  
Beginning at the 1/4 Sec corner bet Sec 19 & 30  
thence South var 20° E.  
2000 a stone 8 x 6 x 27 inches corner No. 1  
thence West  
2009 a stone 7 x 8 x 18 inches corer No. 2  
thence North  
Peds 25 3/4 a stone 3 x 9 x 18 inches corer No 3  
thence East  
59 Peds a stone 3 x 8 x 19 inch cor No 4  
thence North  
54 1/4 Peds a stone 3 x 12 x 18 inch cor No 5  
thence East  
21 Peds to Place of Beginning the 1/4 Sec or - bet. Sec 19 & 30  
a Post in mound of Stone which is also  
the original U.S. 1/4 Sec corer

W. Kimball County Surveyor