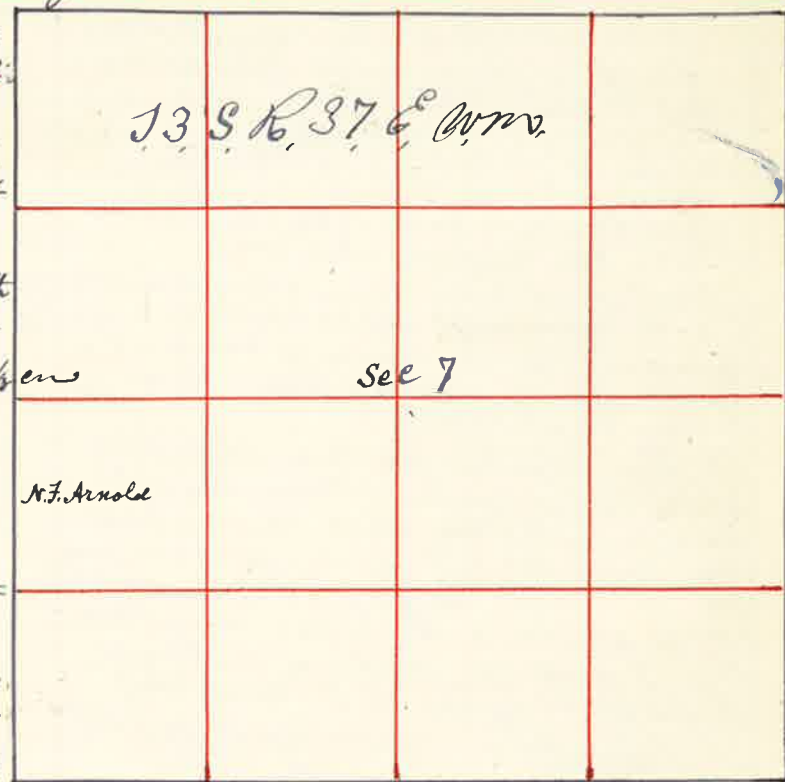


60 Surveyed for N. F. Arnold Dec 3<sup>rd</sup> 1888

By J. W. Kimbrell County Surveyor Plat No. 55

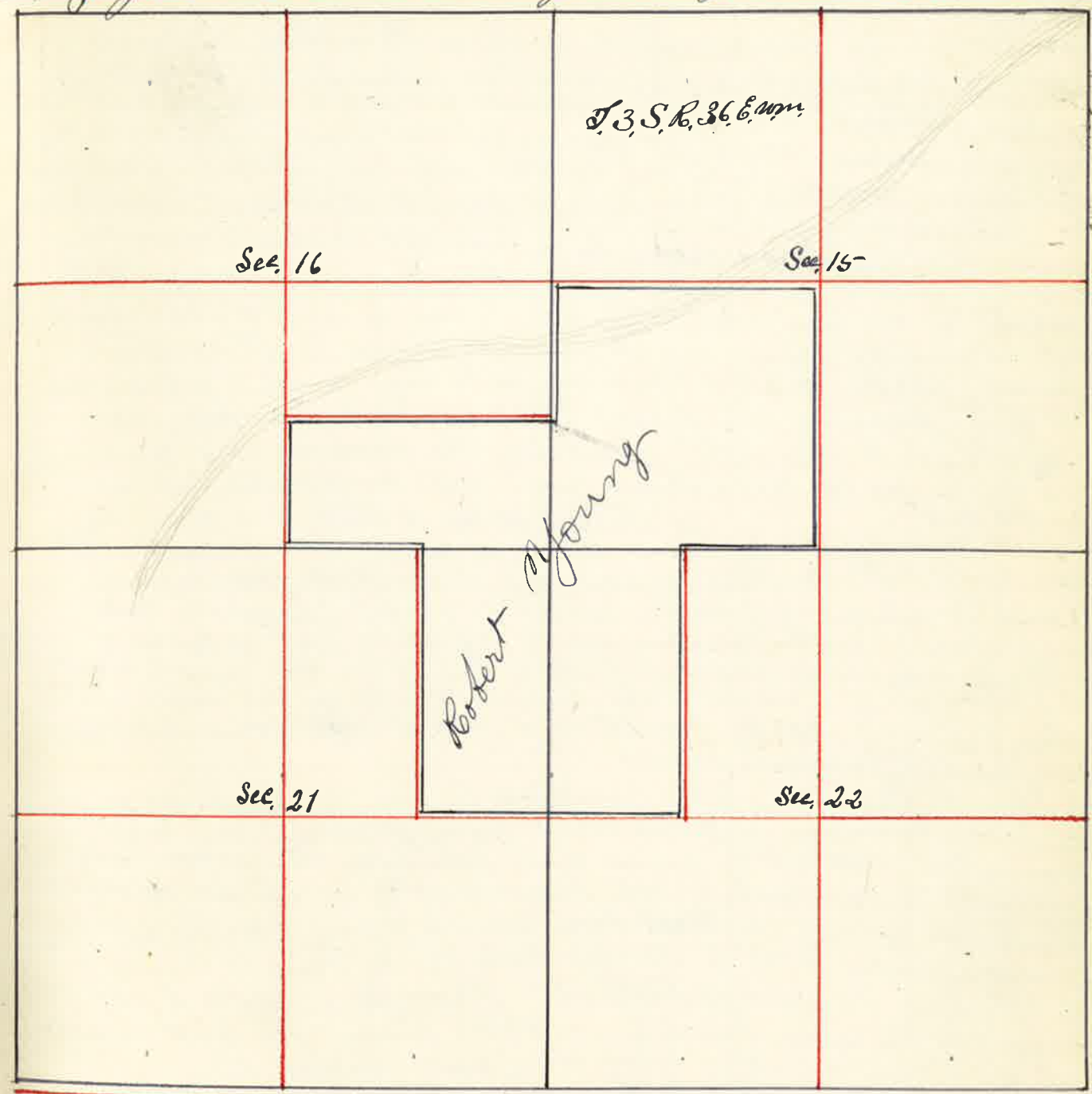
I commenced at the corner to Sec 7-18 = 12 & 13 thence North 4090 chains the 1/4 Sec corner from which a Pine Bear East 8 links distant a " " W 8 links distant from which I run South 2042 chains and set Post in mound of rock from which a Pine 6 inches Bears N 10° 30' E 30 links distant a Pine 20 inches Bears S 78° E 34 links distant the corner to Sec 7-8 = 12 & 13 thence East 4084 chains from which I run West 2030 chains and set Post for 1/8 corner from which a Pine 7 inches Bears S 7° E 22 links distant a Pine 20 inches Bears N 7° 45' E 21 links distant thence North 2042 chains set Post in mound of Stone for 1/4 corner thence West 2070 chains to the 1/8 corner



J. W. Kimbrell County Surveyor

Surveyed for Robert Young Dec. the 4 1888

By J. W. Kimbrell County Surveyor Plat No. 56



I commenced at the corner to Sec 15 = 16 = 21 & 22, from which a Pine 16 inches diameter Bears N 14° 30' W. 72 lks distant a Pine 24 " " " N 32° 30' E 63 " " a Pine 20 " " " S 55° 30' E 95 links distant a Pine 30 inches dia. Bears S 60° 30' E 58 links distant thence North varo 20° 30' E 2000 Chain & set Stake for temporary 1/8 corner 4000 chains set Stake for temporary 1/4 Sec corner 8205 chains the corner to Sec 9 = 10 = 15 and 16 from which a Pine 14 in Bears N 61° E 27 lks distant a Pine 12 in Bears N 28° W 33 lks a Pine 20 in Bears S 19° W 70 lks, a Pine 20 in Bears S 6° 15' E 76 lks distant over