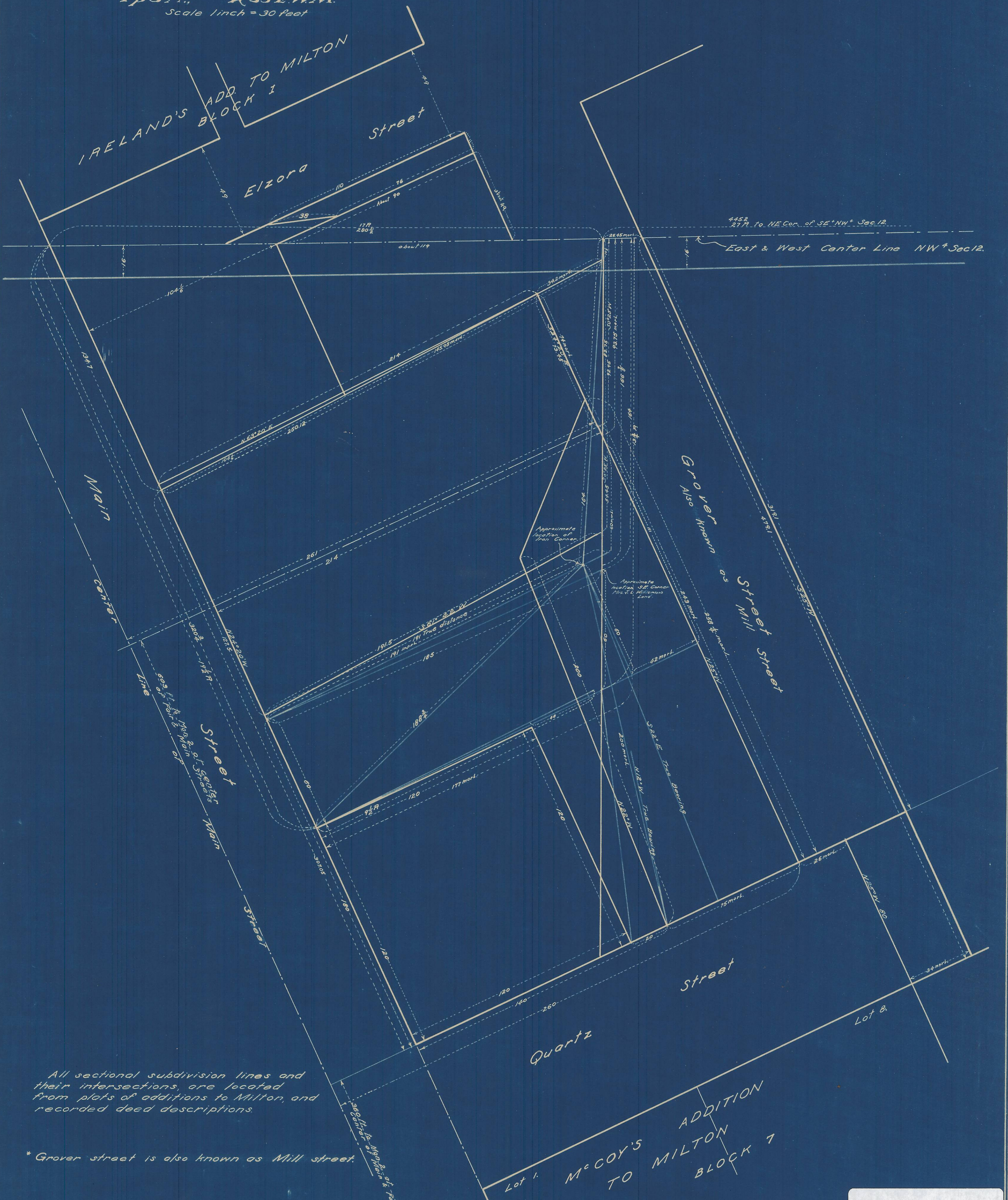


PART OF MILTON, BOUNDED BY
MAIN, ELZORA, GROVER & QUARTZ
STREETS IN
NW⁴ SECTION 12
Tp 5N., R 35E.W.M.
Scale 1 inch = 30 feet



All sectional subdivision lines and their intersections, are located from plats of additions to Milton, and recorded deed descriptions.

* Grover street is also known as Mill street.

McCoy's ADDITION TO MILTON BLOCK 7

Hartman - Abstract - Co.,
Pendleton Oregon

420