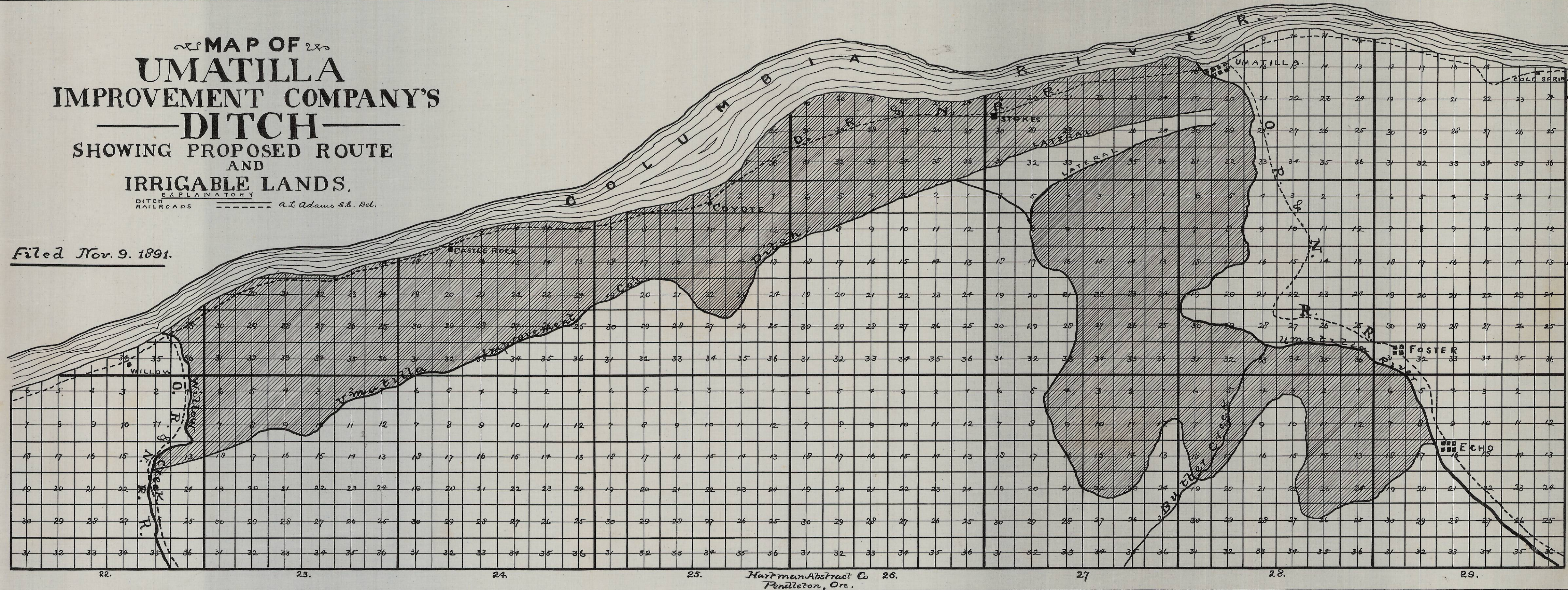


MAP OF
UMATILLA
 IMPROVEMENT COMPANY'S
DITCH
 SHOWING PROPOSED ROUTE
 AND
 IRRIGABLE LANDS.

EXPLANATORY
 DITCH RAILROADS *a. L. Adams & Co. Del.*

Filed Nov. 9, 1891.



Hartman Abstract Co
 Pendleton, Ore.