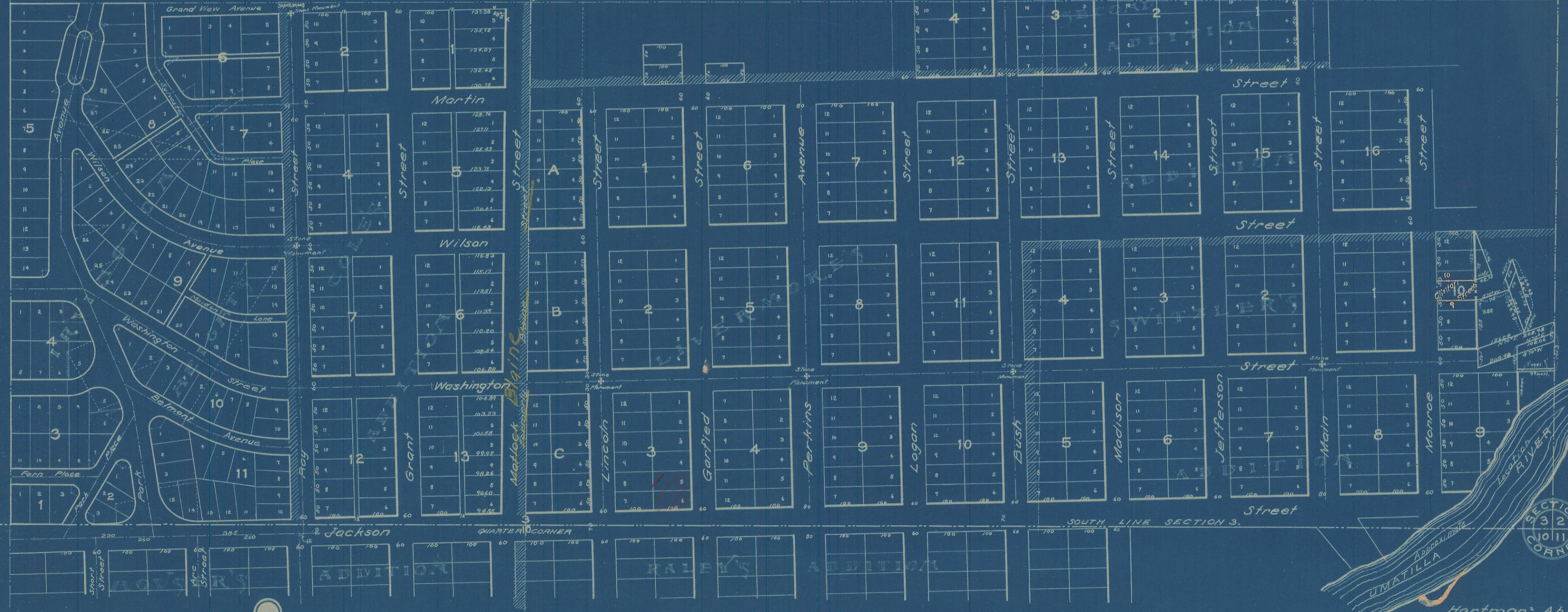
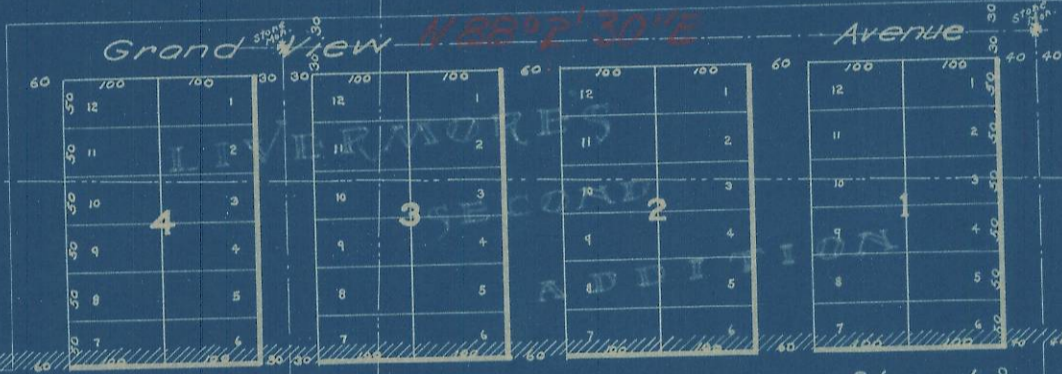
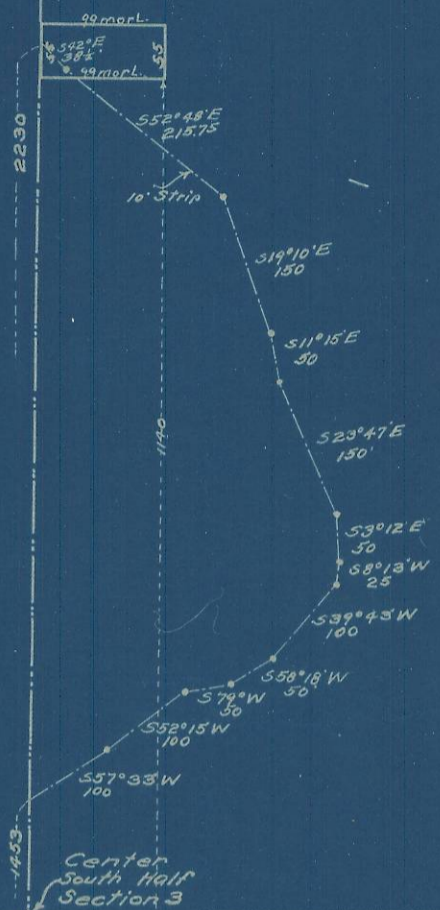


SE⁴ & E²SW⁴ SECTION 3
 Tp 2 N. R 32 E. W. M.
 Scale 1 inch = 400 Feet

Note: All sectional subdivision lines and their intersections are located from plats of additions to Pendleton and recorded deed descriptions.



396

There is no record showing width of Math St. (formerly Blaine St) north of Jackson St. and length of Washington St. in Block A, 1890. L.W. Mearns' sub. A. Pendleton.

The 2 scaled distances across said st. is about 60'. Assuming width as 80'. Width of said st. along north line of Jackson St. is 44-60' = 6003'.

Let length of South Line of P. French, Lot 7, Block C, Lingamores Add. = 40'. Total of northern produced corner line of said st. in Abstract Act. To the west line of Lincoln St. measured along north line of Jackson St. is 15'. 15 + 40 + 212 + 60 + 100 + 12 + 1995 + 1600 + 127 + 100 = 30160 + 60 + 60 = 30280 = 750'.