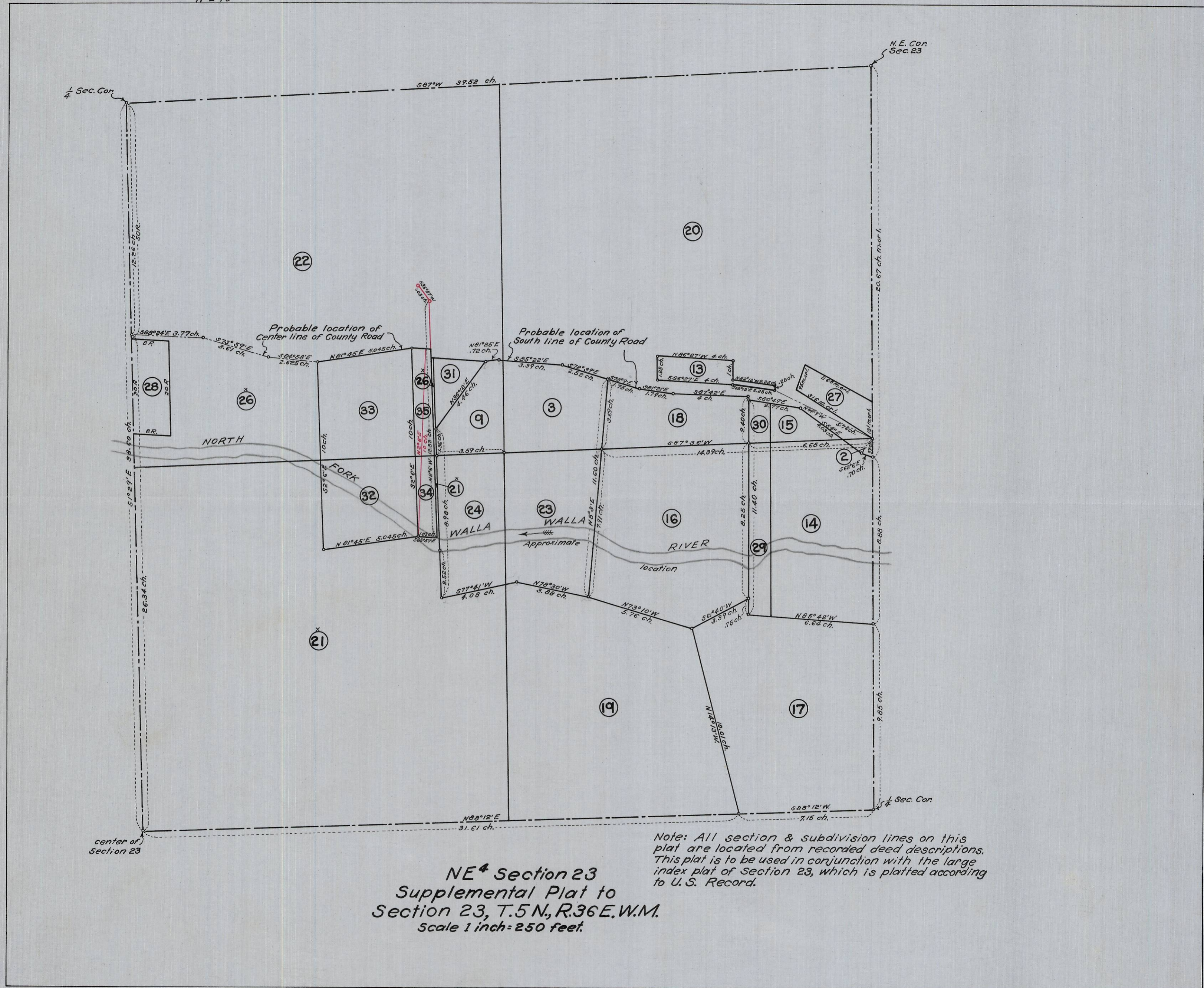


H-LA3

H-L43



NE<sup>4</sup> Section 23  
 Supplemental Plat to  
 Section 23, T.5N., R.36E.W.M.  
 Scale 1 inch = 250 feet.

Note: All section & subdivision lines on this plat are located from recorded deed descriptions. This plat is to be used in conjunction with the large index plat of section 23, which is platted according to U. S. Record.