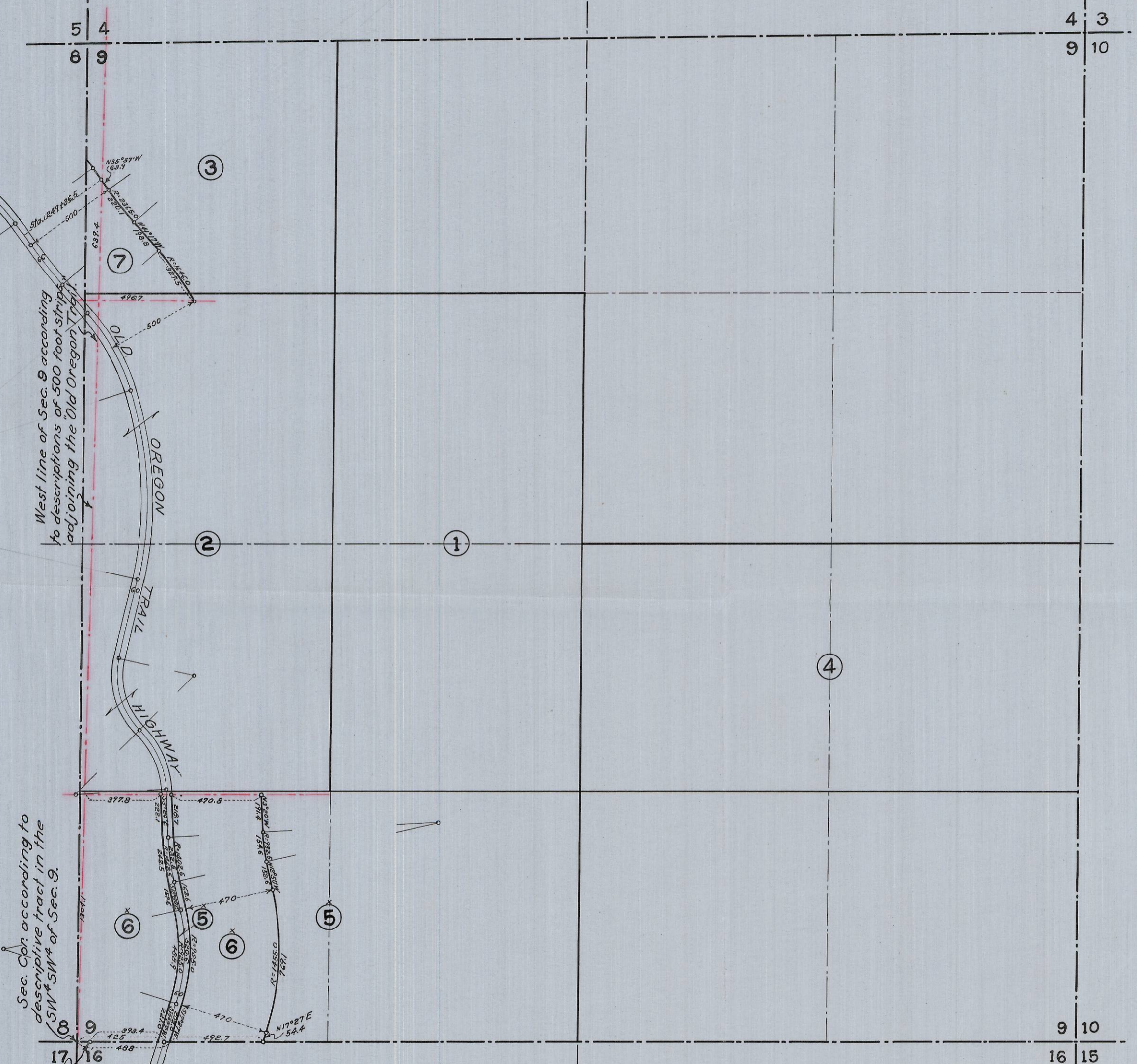


H-569

H-569

H-R 68



West line of Sec. 9 according to descriptions of 500 foot strips adjoining the Old Oregon Trail.

Sec. Cor. according to descriptive tract in the SW 1/4 SW 1/4 of Sec. 9.

Sec. Cor. according to Resolution establishing Highway

Section 9
T.1N., R.35E.W.M.
Scale 1 inch = 500 feet.

4 3
9 10

9 10
16 15

H-R 68

H-569