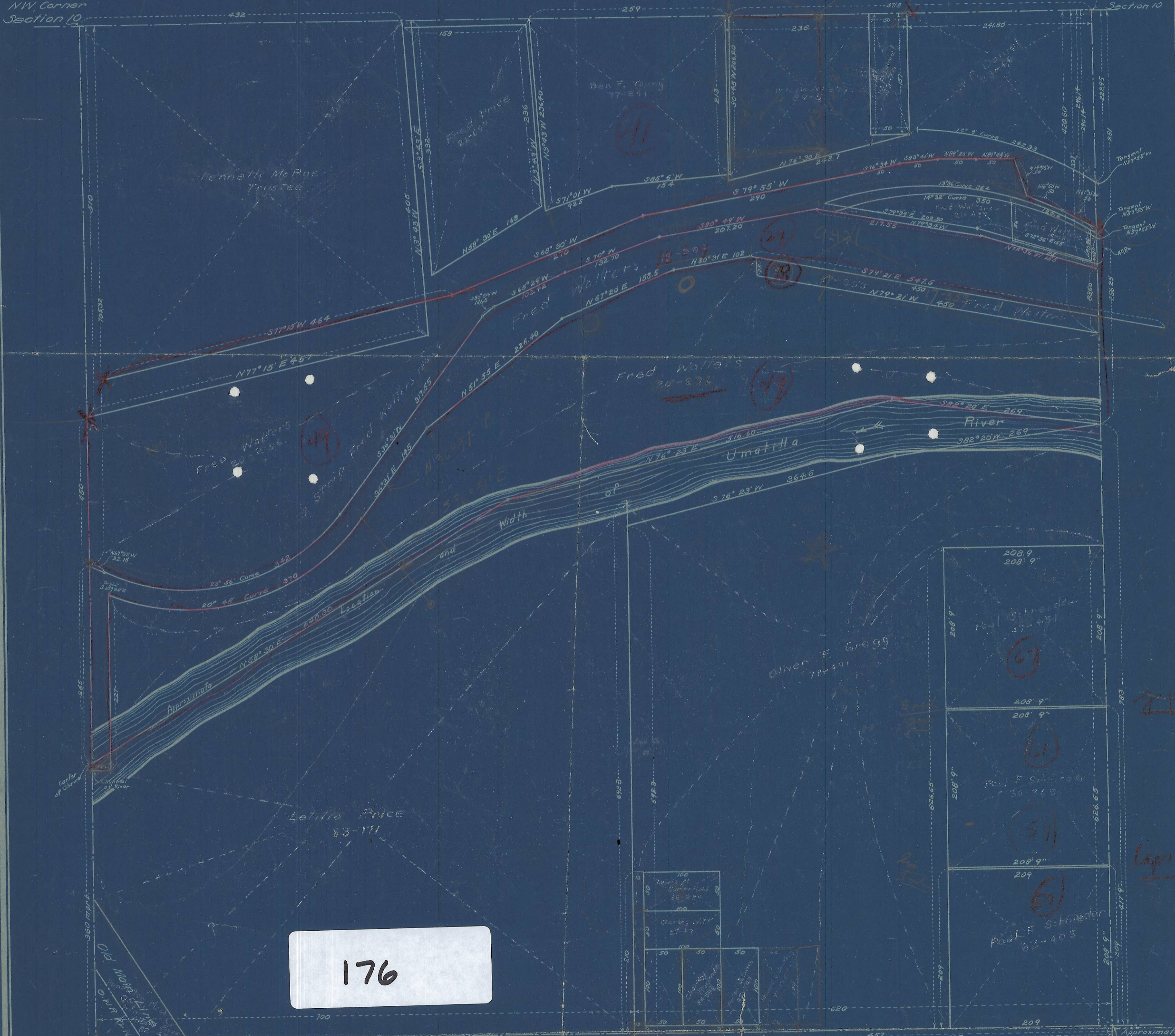


NW<sup>4</sup>NW<sup>4</sup> SECTION 10  
 Tp 2 N., R 32 E W.M.  
 Scale 1 inch = 100 feet

NW Corner  
 Section 10

NE Corner  
 NW<sup>4</sup>NW<sup>4</sup>  
 Section 10

Handwritten notes in the top right corner:  
 48  
 12  
 249  
 471  
 1326  
 2418  
 234  
 471  
 35  
 121



176

Approximate  
 location of  
 Center NW<sup>4</sup>  
 Section 10.