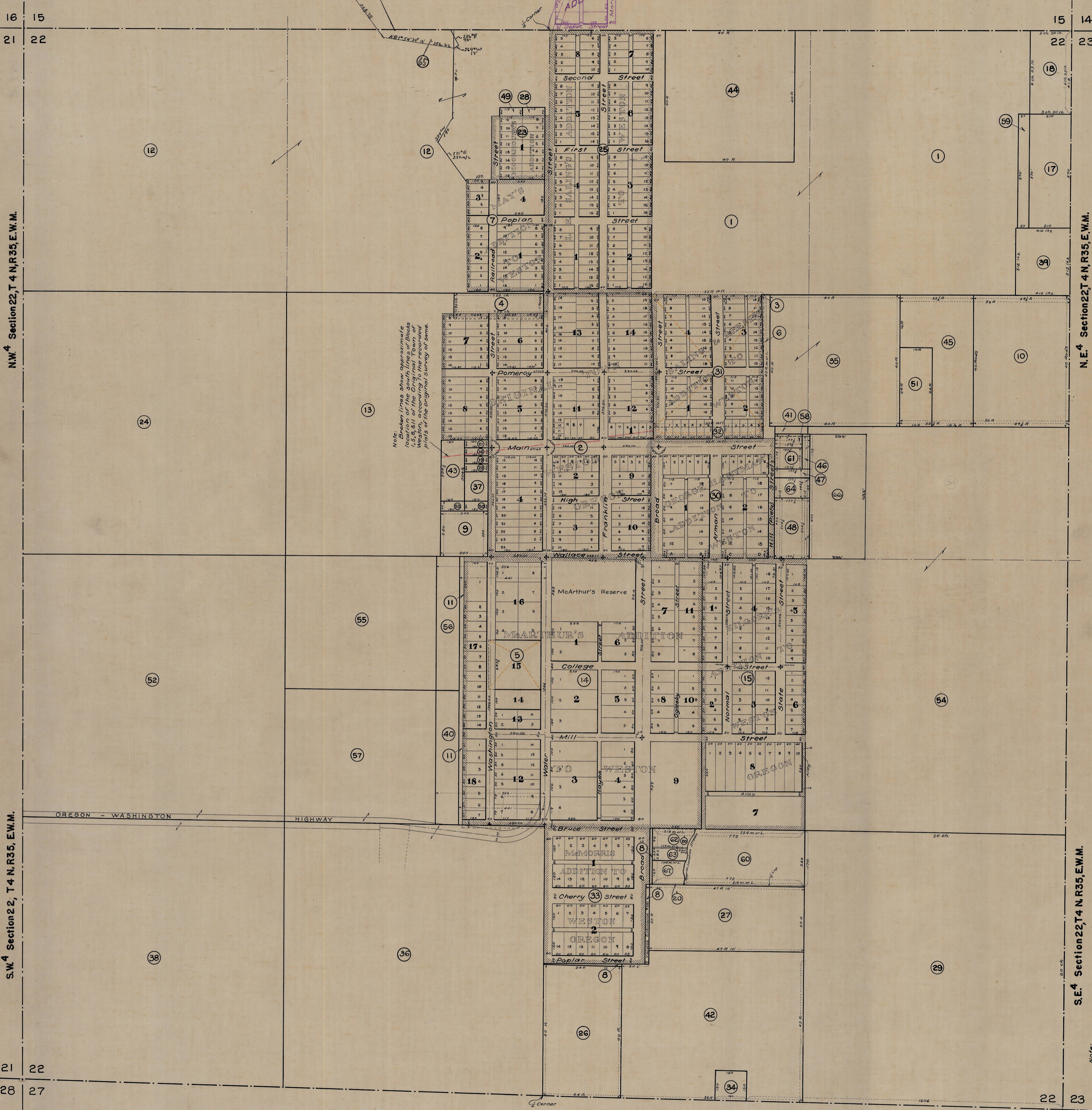


Weston

# SECTION 22 T. 4 N., R. 35 E.W.M. Scale 1 inch = 200 feet.



N.W. 4 Section 22, T 4 N, R35, E.W.M.

S.W. 4 Section 22, T 4 N, R35, E.W.M.

N.E. 4 Section 22, T 4 N, R35, E.W.M.

Note: Broken lines show approximate location of lots in the original town of Weston, according to the recorded plat of the original survey of same.

Note: With a few exceptions, the City of Weston is laid out on this plat according to a survey of same made by A.L. Adams, Civil Engineer, on July 18, 1890. The data of said Adams Survey was taken from a copy of the plat of said Adams Survey filed in the Umatilla County Court House, numerous instances were found wherein this plat differs from the original plat of said Adams Survey. It is deemed advisable to be cautious in the use of this plat for the conveyance of property or other official purposes, as to lots in the Original Town and adjoining additions.

64

27 26