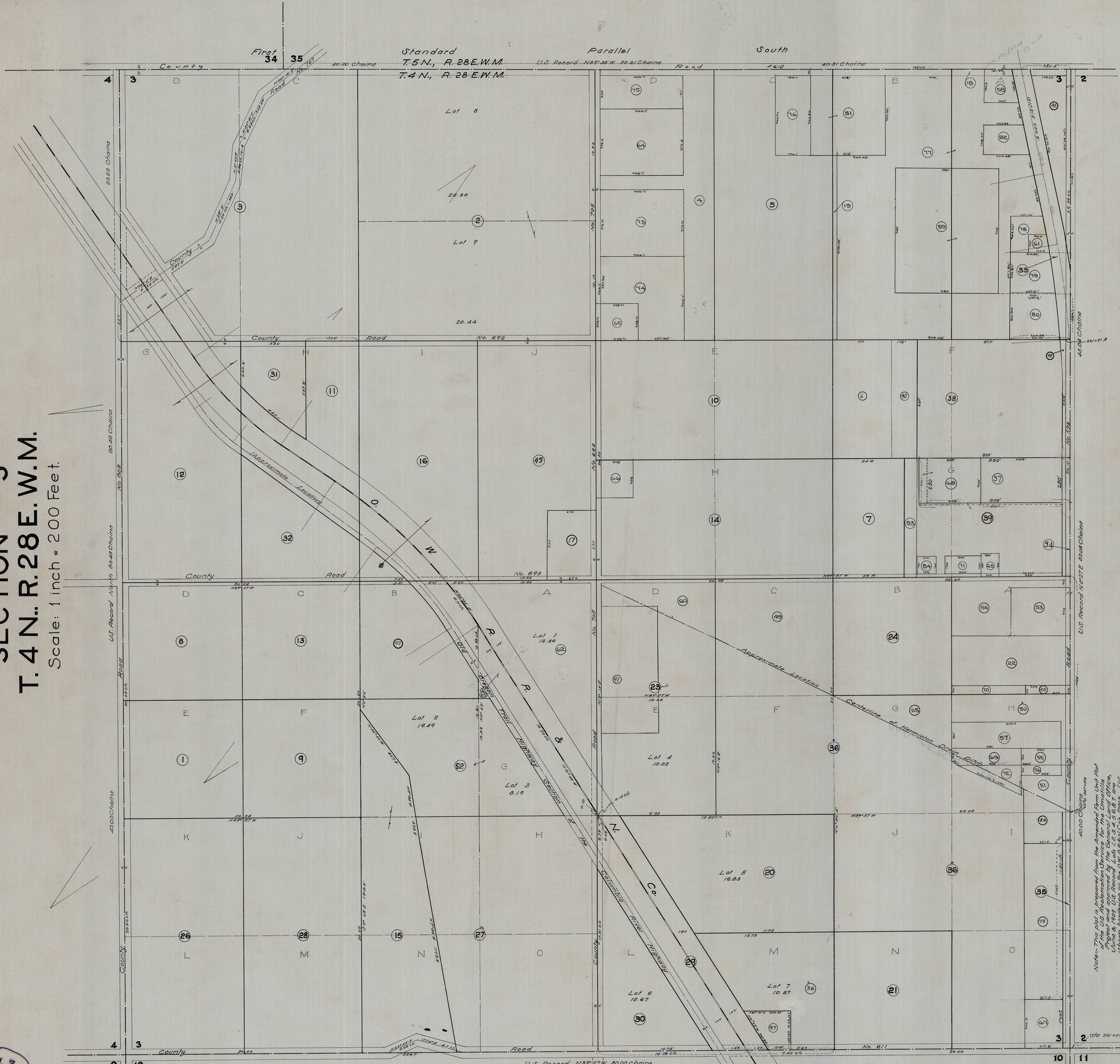


**SECTION 3**  
**T. 4 N., R. 28 E., W. M.**  
 Scale: 1 inch = 200 Feet.

43



Note: This plat is prepared from the Abstract from the Plat of the U.S. Reclamation Service for the Umavilla Project and approved by the General Land Office, June 8, 1909. U.S. Record Lots 1, 2, 3, 4, 5, 6, 7 and 8 are based on the original plat of June 5, 1908, as shown on a supplemental plat of Section 3, and approved by the General Land Office October 14, 1908.