

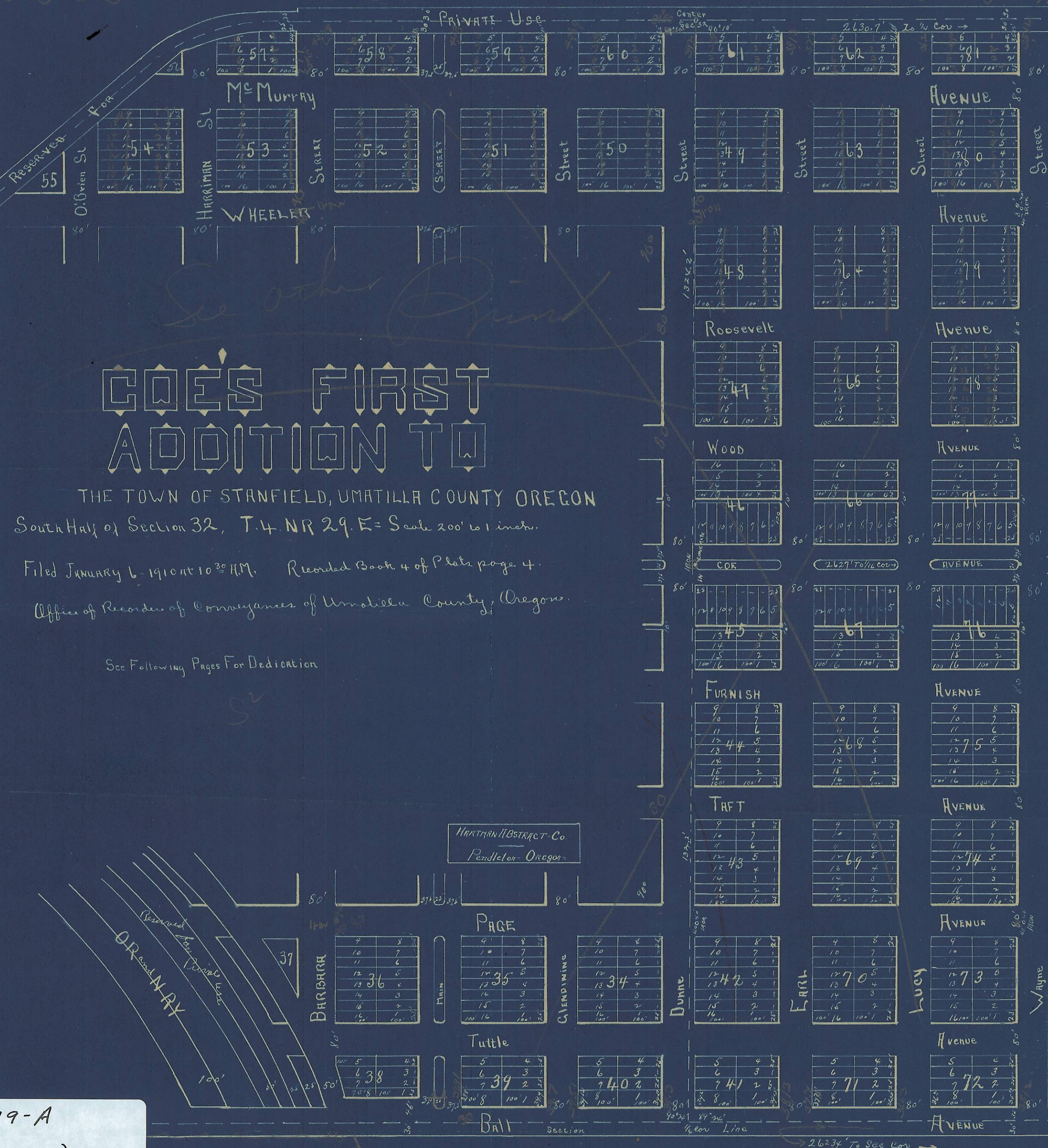
# COE'S FIRST ADDITION TO

THE TOWN OF STANFIELD, UMATILLA COUNTY OREGON  
 South Half of Section 32, T.4. NR 29. E = Scale 200' to 1 inch.

Filed JANUARY 6, 1910 AT 10:30 AM. Recorded Book 4 of Plats page 4.

Office of Recorder of Conveyances of Umatilla County, Oregon.

See Following Pages For Dedication



HARTMAN ABSTRACT Co  
 Pendleton - Oregon

11-179-A  
 (AN 29 32)