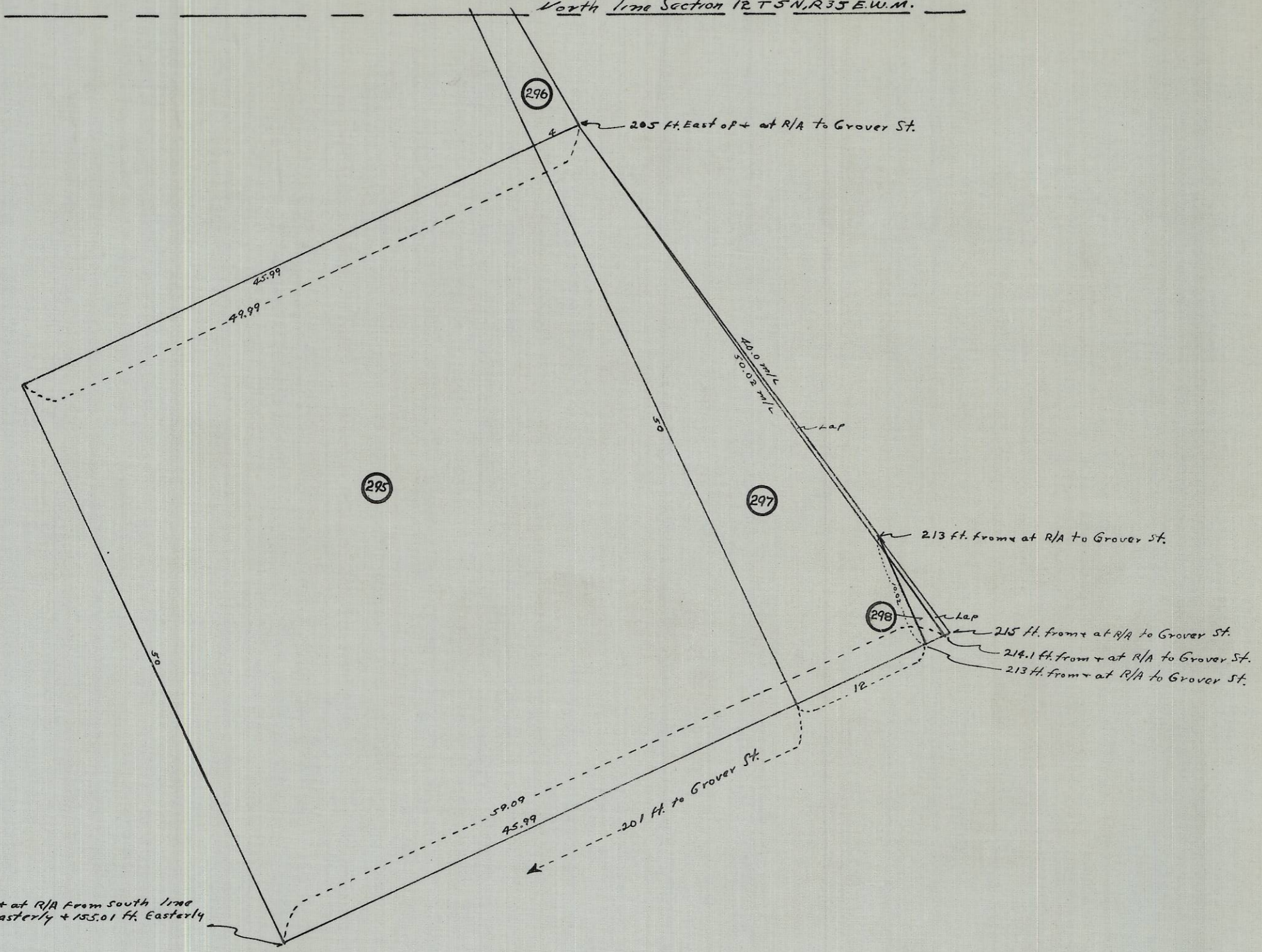
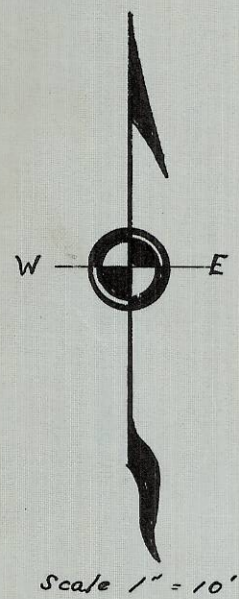


PART NW¹/₄ NE¹/₄ NW¹/₄ SEC. 12, T5N, R35, E.W.M.

North line Section 12, T5N, R35, E.W.M.



This point 90 ft. S¹/₄ + at R/A from South line of Martin St. extended Easterly + 155.01 ft. Easterly + at R/A to Grover St.

05-89-A