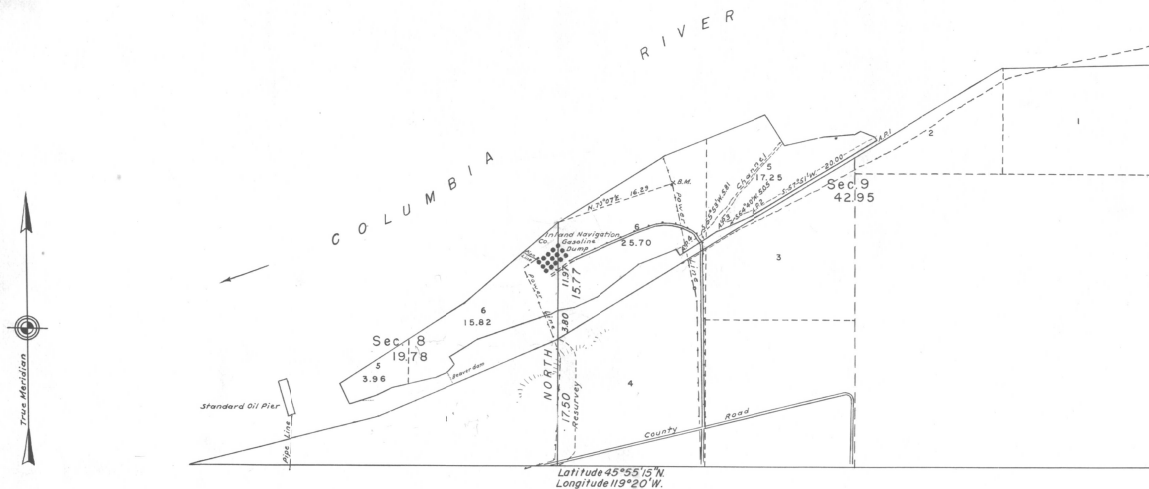


TOWNSHIP N<sup>o</sup> 5 NORTH, RANGE N<sup>o</sup> 28 EAST, OF THE WILLAMETTE MERIDIAN, OREGON.

PLAT OF AN ISLAND WITH ACCRETIONS IN THE COLUMBIA RIVER.

SECTIONS 8 &amp; 9.



Scale: 1 Inch = 10 Chains.

Mean Magnetic Declination 21°45'E.

Area Surveyed 62.73 Acres.

LINES DESIGNATED	BY WHOM SURVEYED	GROUP NO.	DATE OF SPECIAL INSTRUCTIONS	WHEN SURVEYED	
				BEGUN	COMPLETED
SUBDIVISIONAL	NORMAN D. PRICE	278	APRIL 3, 1943.	APRIL 7, 1943	APRIL 11, 1943.
MEANDER					
MISCELLANEOUS					

UNITED STATES DEPARTMENT OF THE INTERIOR  
GENERAL LAND OFFICE

DENVER, COLORADO, JUNE 19, 1943.  
THIS PLAT OF TOWNSHIP NO. 5 NORTH, RANGE NO. 28 EAST, OF THE WILLAMETTE MERIDIAN, OREGON, IS STRICTLY CONFORMABLE TO THE FIELD NOTES OF THE SURVEY THEREOF WHICH HAVE BEEN EXAMINED AND APPROVED.

*Thurston H. Allen*  
ACTING ASSISTANT  
SUPERVISOR OF SURVEYS.

WASHINGTON, D., C., JULY 31, 1943.  
THE SURVEY REPRESENTED BY THIS PLAT HAVING BEEN CORRECTLY EXECUTED IN ACCORDANCE WITH THE REQUIREMENTS OF LAW AND THE REGULATIONS OF THIS OFFICE, IS HEREBY ACCEPTED.

*Joel Davis Wolfson*  
ASSISTANT COMMISSIONER.