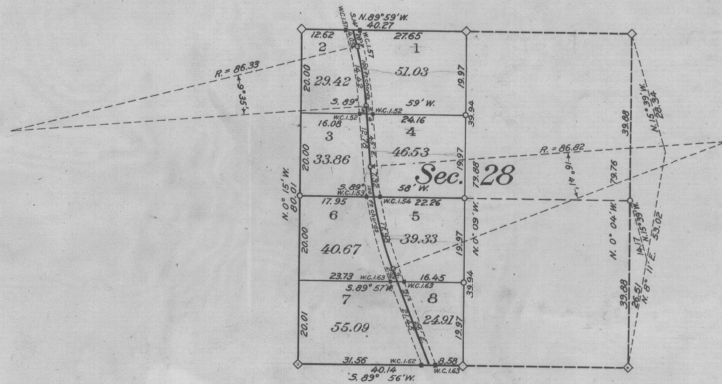


DEPARTMENT OF THE INTERIOR  
 UNITED STATES RECLAMATION SERVICE  
 A. P. DAVIS DIRECTOR AND CHIEF ENGINEER  
 UMATILLA PROJECT  
 SUPPLEMENTAL PLAT  
 SECTION 28  
 TOWNSHIP 5 NORTH RANGE 28 EAST W. M. OREGON  
 SURVEYED BY E. T. ERIKSEN, ASSISTANT ENGINEER, U. S. R. S.  
 UNDER AUTHORITY OF DEPARTMENTAL INSTRUCTIONS OF OCTOBER 24, 1906  
 SCALE: 4 INCHES = 1 MILE  
 FEBRUARY 1916



- ◊ DENOTES CORNER OF PREVIOUS SURVEY FOUND IN PLACE.
- DENOTES CORNER SET BY E. T. ERIKSEN, ASSISTANT ENGINEER, U. S. R. S.
- DENOTES WITNESS CORNER SET BY E. T. ERIKSEN.

THE ACCOMPANYING DIAGRAM OF THE SURVEY OF SECTION 28 IN T. 5 N., R. 28 E., W. M., OREGON, EXECUTED UNDER AUTHORITY OF DEPARTMENTAL INSTRUCTIONS OF OCTOBER 24, 1906, IS CORRECT AND ACCORDING TO THE FIELD NOTES THEREOF ON FILE IN THIS OFFICE WHICH HAVE BEEN EXAMINED AND APPROVED.

U. S. RECLAMATION SERVICE  
 WASHINGTON, D. C. *January 30*, 1917

*A. P. Davis*  
 DIRECTOR AND CHIEF ENGINEER

*406*  
 THE ACCOMPANYING DIAGRAM OF THE SURVEY OF SECTION 28 IN T. 5 N., R. 28 E., W. M., OREGON, IS CONFORMABLE TO THE FIELD NOTES THEREOF ON FILE IN THIS OFFICE WHICH HAVE BEEN EXAMINED AND ACCEPTED.

DEPARTMENT OF THE INTERIOR  
 GENERAL LAND OFFICE  
 WASHINGTON, D. C. *FEB. 15*, 1917

*[Signature]*  
 COMMISSIONER

ACCESSION NO. 17257

ACCEPTED BY THE HON. COMMISSIONER G. L. O. *Feb. 15, 1917*