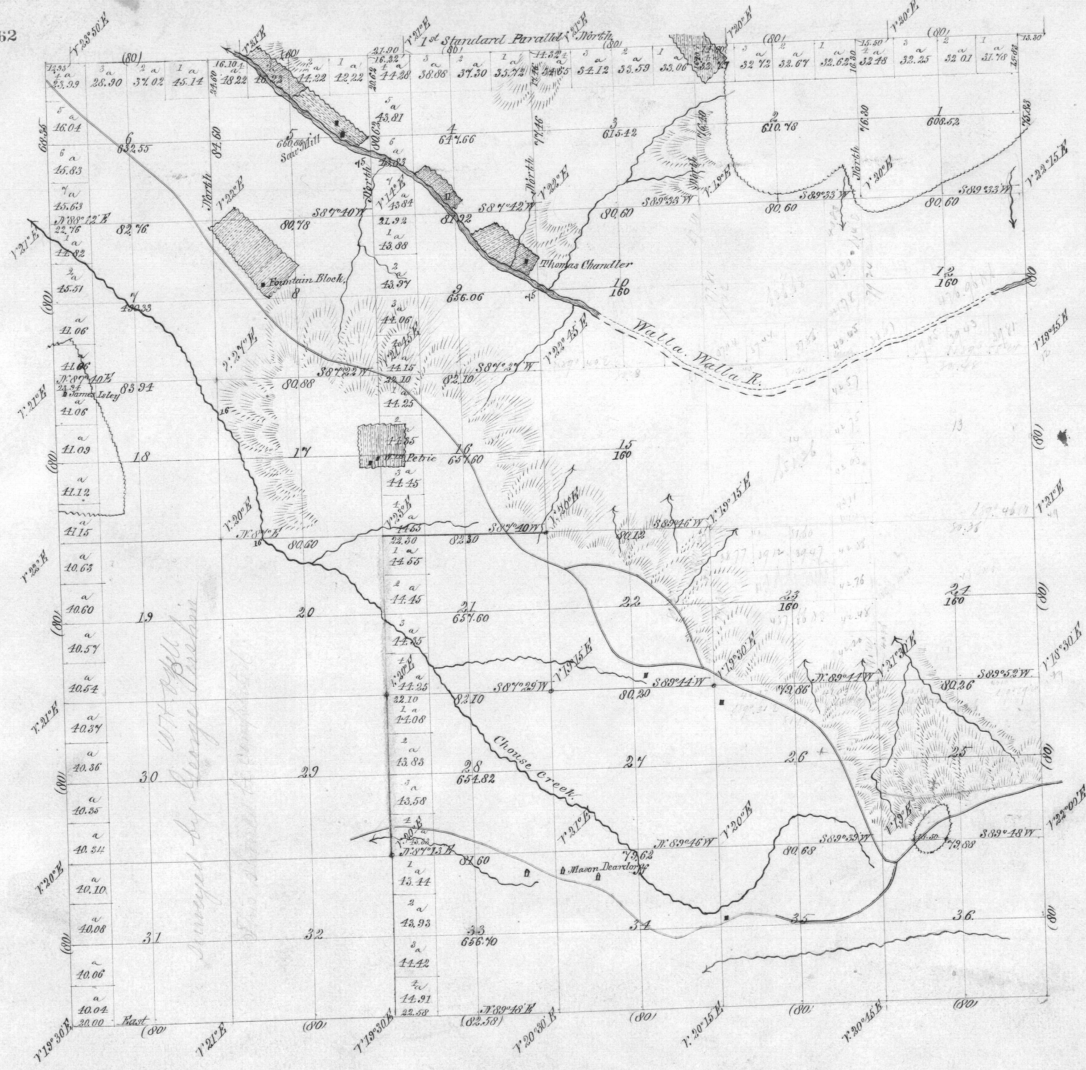


Township No. 4 North Range No. 37 East Willamette Meridian, Oregon.

4462



*General Description*  
 The surface of this township is all mountainous except a small part along the Wallowa River. In the southern part a rolling plateau, the North and S.E. the high and irregular bluffs of the river the western part is well timbered and also Secs. 1 and 2 in the northern part. There is some good agricultural land in the flats and in the river bottoms.

Total Acres, 13500.32.



Scale 40 Chains to an Inch.

Lines.	Contractor.	Contract.		Amount Surveyed.			Commenced.	Completed.
		No.	Date.	Miles.	Chains.	Links.		
Subdivision Intersections.	Geo. S. Perkins	533	July 29, 1879	41.	76	74	August 16, 1879	August 30, 1879
	"		Total	42.	73	48		
Augmented States	"	532		37.	72	48		
	"			4.	21.	00		

The above Map of the subdivision lines of Township No. 4 North Range No. 37 East Willamette Meridian, Oregon, is strictly conformable to the original field notes of the survey thereof on file in this office, which have been examined and approved.  
 U. S. Surveyor-General's Office,  
 Portland, Oregon, Oct. 22<sup>d</sup> 1879.

*James C. Freeman*  
 Surveyor-General of Oregon