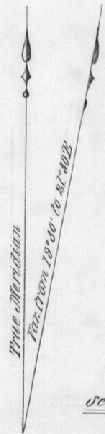
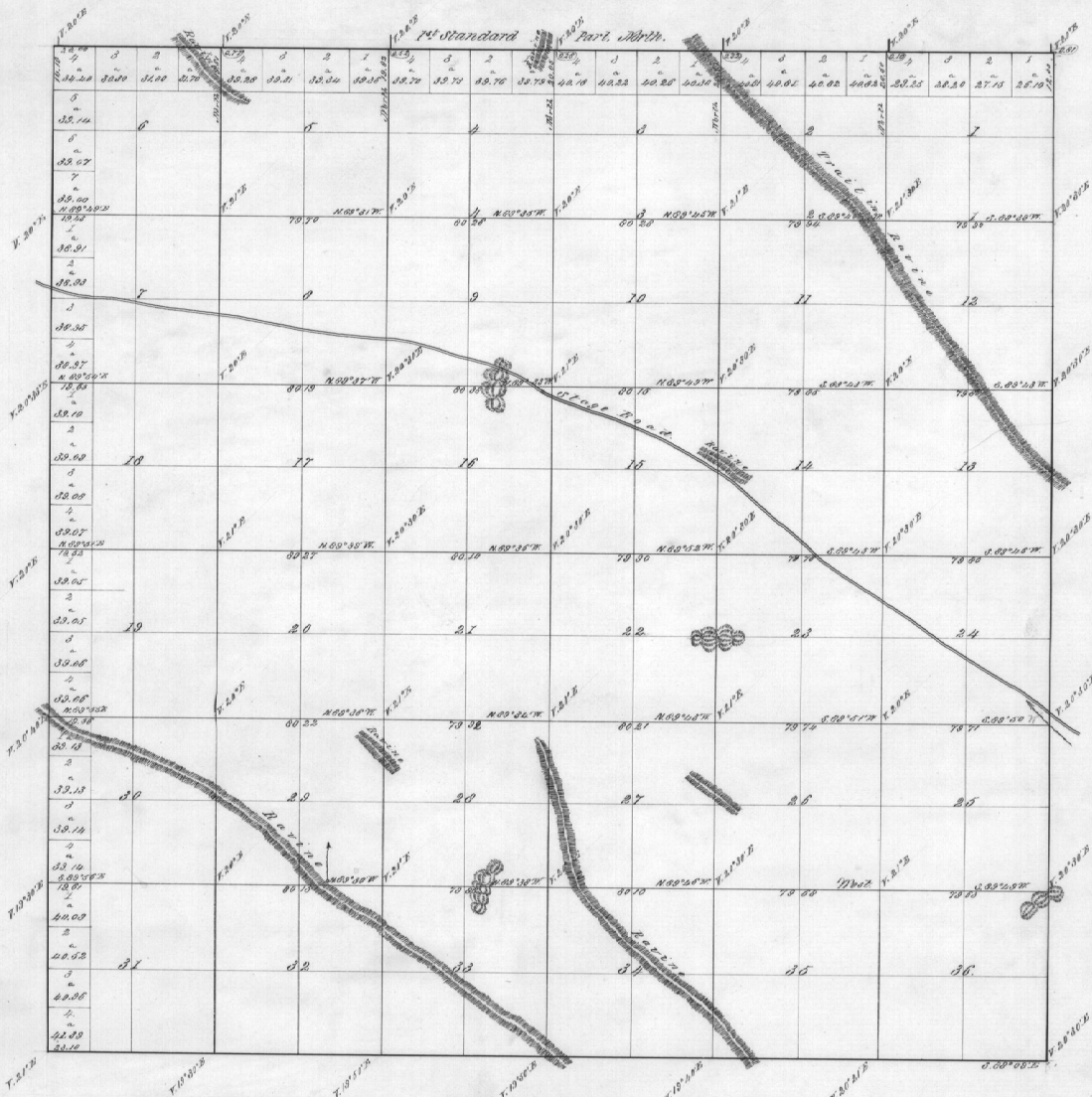


Township No. 4 North, Range No. 31 East N.W. Mer.

4001



Scale 40 Chs to an Inch.

Lines	Contractor	Contract No.	Contract Date	Acres Surveyed	Completed
Subdivisions	W. H. Odell	114	July 2 <sup>d</sup> 1888	59 79 59	July 14 <sup>th</sup> 1888
Total Acres		22344.64			

The above map of survey of subdivisional lines of T. 4 N., Range 31 E. 1st Meridian, N.W. Mer. Oregon, is strictly conformable to the original field notes of the survey thereof, on file in this office which have been examined & approved.  
 Surveyor General's Office,  
 Eugene, Ore. Feb. 18<sup>th</sup> 1887  
 E. L. Applegate  
 Surveyor Gen. of Oregon.