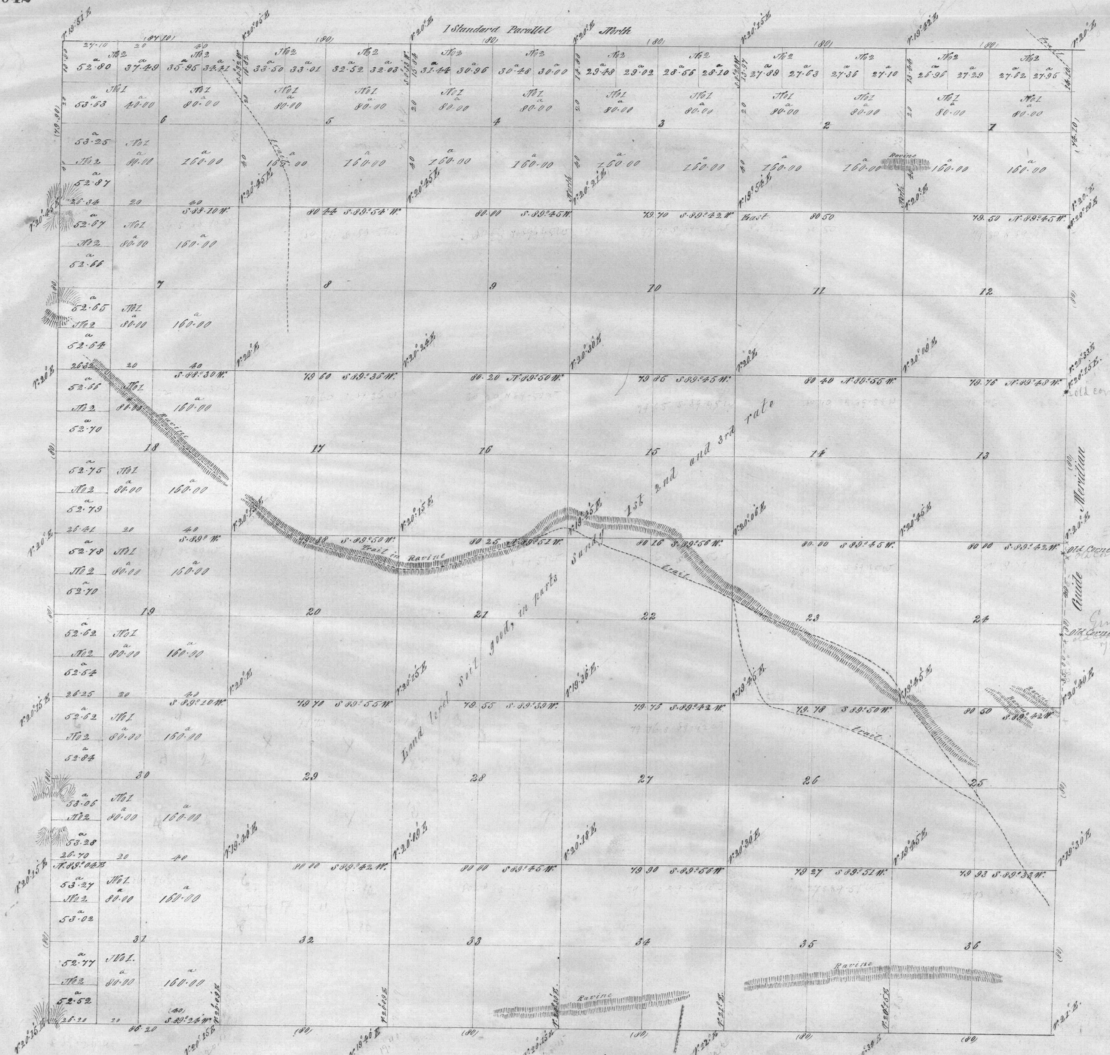


Township No 4 North Range No 30 East Willamette Meridian

Completed



in c. bk  
the line 60-05-60  
the line - 23124-84 ✓

Proof of 5 Chs in Guide Meridian  
75 Chs + out 90 Chs

Scale 40 Chains to an inch

Surveys designated	By whom surveyed	Cont. of act		Amt. of Survey Mils. Chs. Links	When Surveyed	Dates returned to the Com. Office
		No	Date			
Subdivisions	Dolphus S. Payne	100	August 1st 1861	60 05 60	Comm. Sept 7th 1862	To: 4th 1862.
Total number of Acres	23124.84				Five " 15th "	

The above Map of Township No 4 North Range No 30 East of the Willamette Meridian Oregon, is strictly conformable to the field notes of the survey thereon, on file in this Office, which have been examined and approved.

Surveyor General's Office  
Eugene City December 7th 1862.

*J. J. Payne*  
Surveyor