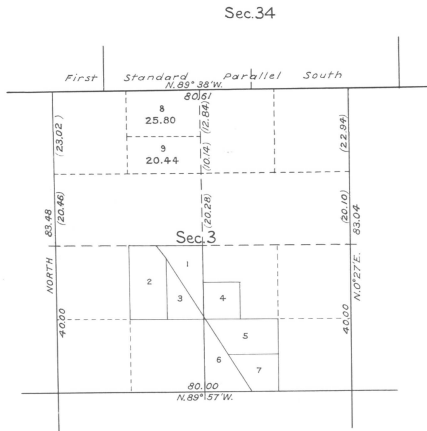


TOWNSHIP No. 4 NORTH, RANGE No. 28 EAST,
OF THE WILLAMETTE MERIDIAN, OREGON.
SUPPLEMENTAL PLAT OF SECTION 3.

SCALE: 20 CHAINS TO AN INCH.



Public Survey Office,
Portland, Oregon, September 7, 1932.

The above supplemental plat of Section 3, Township No. 4 North, Range No. 28 East, of the Willamette Meridian, Oregon, based upon the plat accepted June 8, 1909, showing the subdivision of the fractional NE $\frac{1}{4}$ in said Section 3 into its north and south halves, to accommodate the preparation of a farm unit plat for the Umatilla Project, prepared in accordance with the Commissioner's letter "E" dated August 30, 1932, is hereby approved.

Joseph A. Vanoy
Office Cadastral Engineer.

Department of the Interior,
General Land Office,
Washington, D. C., October 14, 1932.

The amended lottings represented by this supplemental plat having been correctly made in accordance with the regulations of this office, the plat is hereby accepted.

J. H. Smith
Acting Assistant Commissioner.