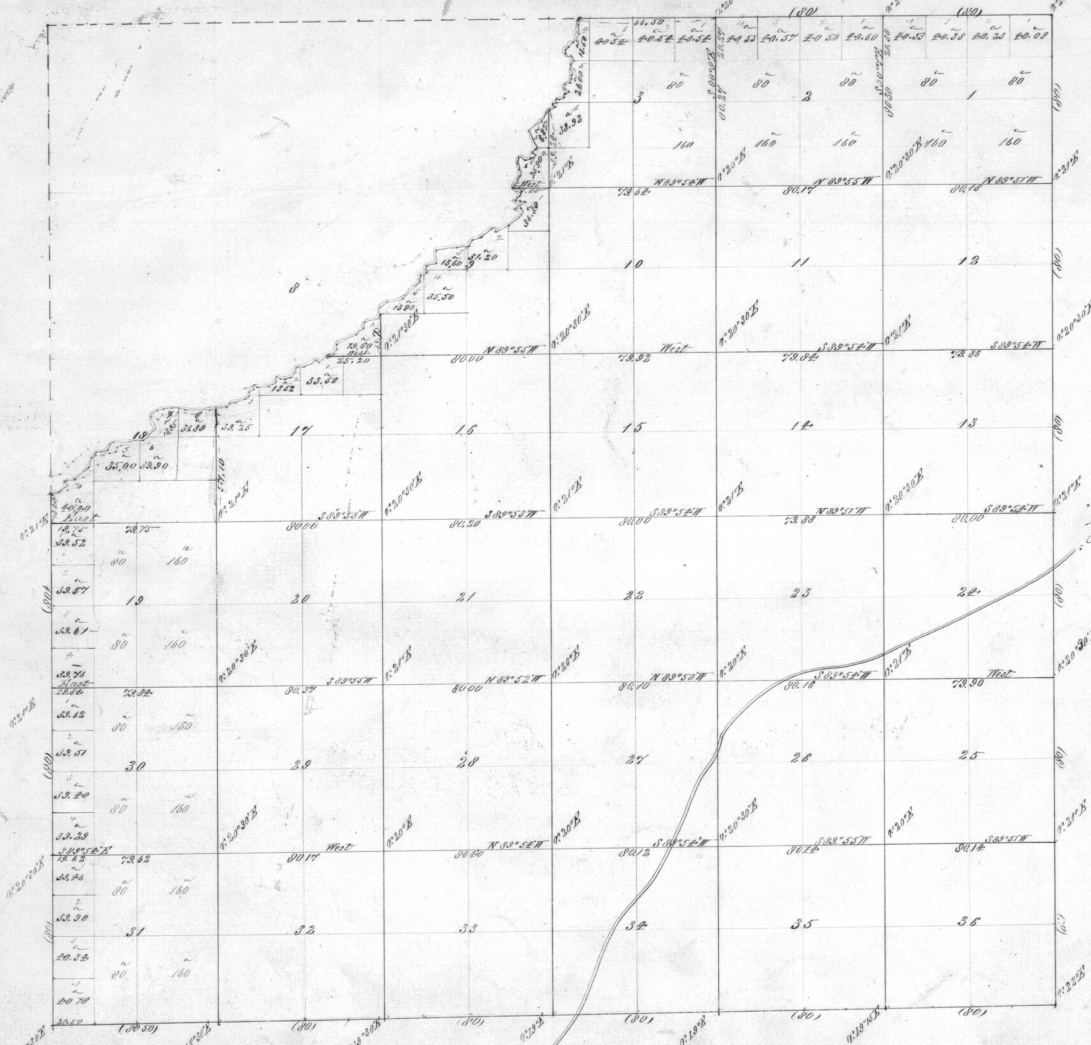


Area	Value
1	200.00
2	200.00
3	200.00
4	200.00
5	200.00
6	200.00
7	200.00
8	200.00
9	200.00
10	200.00
11	200.00
12	200.00
13	200.00
14	200.00
15	200.00
16	200.00
17	200.00
18	200.00
19	200.00
20	200.00
21	200.00
22	200.00
23	200.00
24	200.00
25	200.00
26	200.00
27	200.00
28	200.00
29	200.00
30	200.00
31	200.00
32	200.00
33	200.00
34	200.00
35	200.00
36	200.00
37	200.00
38	200.00
39	200.00
40	200.00
41	200.00
42	200.00
43	200.00
44	200.00
45	200.00
46	200.00
47	200.00
48	200.00
49	200.00
50	200.00
51	200.00
52	200.00
53	200.00
54	200.00
55	200.00
56	200.00
57	200.00
58	200.00
59	200.00
60	200.00
61	200.00
62	200.00
63	200.00
64	200.00
65	200.00
66	200.00
67	200.00
68	200.00
69	200.00
70	200.00
71	200.00
72	200.00
73	200.00
74	200.00
75	200.00
76	200.00
77	200.00
78	200.00
79	200.00
80	200.00
81	200.00
82	200.00
83	200.00
84	200.00
85	200.00
86	200.00
87	200.00
88	200.00
89	200.00
90	200.00
91	200.00
92	200.00
93	200.00
94	200.00
95	200.00
96	200.00
97	200.00
98	200.00
99	200.00
100	200.00



*A different plate of this map file  
9/24/11*

*General Description  
The land in this description is broken or  
rolling. Soil 1<sup>st</sup> and 2<sup>nd</sup> rate. Good  
grass*

*Re-surveyed Plat of Sec. 32.  
Accepted by G. L. C. Feb. 6, 1913*



Lines	Contractor	Contract		Approved Surveyors Mines Chains Links	Commenced	Completed
		No	Date			
Subdivisions	J. H. Morley	132	October 2 <sup>nd</sup> 1877	51 00 66	October 26 1877	October 30 1877

*The above Map of T. 3 N. R. 31 E. W. 1/4 Sec. 32, Oregon is strictly conformable  
to the original field notes of the survey thereon, on file in this Office which  
have been examined and approved,  
Surveyor General's Office  
Eugene, Ore. June 21<sup>st</sup> 1912*

*W. H. Cole*