

SUPPLEMENTAL PLAT UIR 9²
of
Section 32, T.3N., R.34 E. of the Willamette Meridian, Oregon

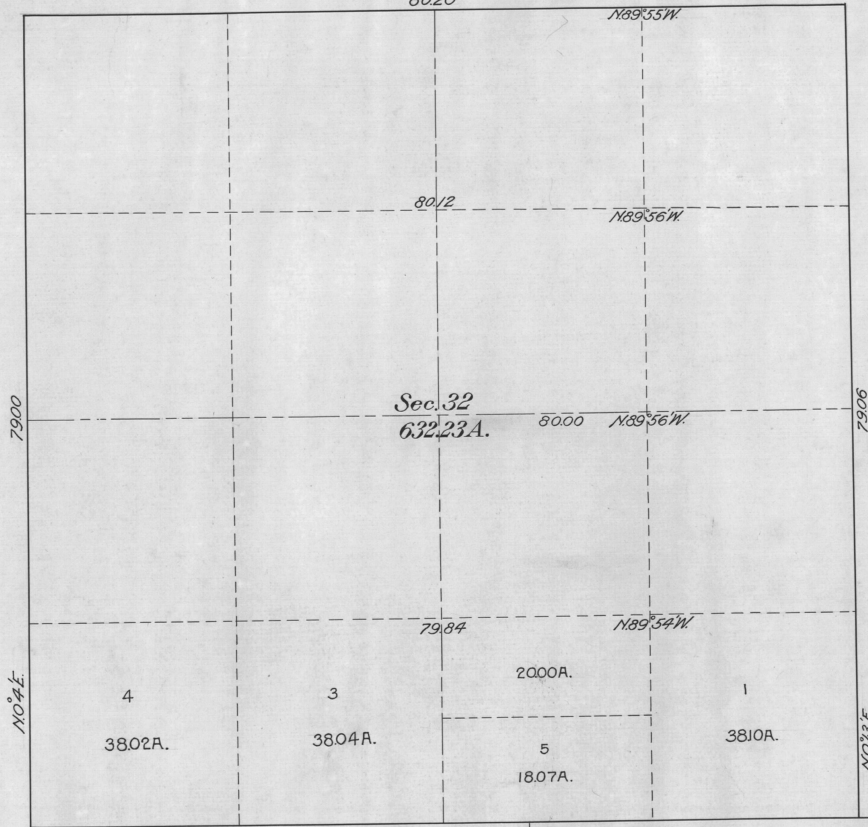
Scale 500ft = 1 Inch

30

29
80.20

28

31



33

6

5

I hereby certify the above to be a correct Supplemental Diagram of Section 32, T.3N., R.34 E. of the Willamette Meridian, Oregon, originating from original Lot 2, of 1st plat approved June 14, 1899, the N 1/2 of the SW 1/4 of S. 1/4 of said Sec., so that the residual 1807 acres can have assigned to it an appropriate lot number (Lot No. 5) by which it is to be designated in the trust patent to be issued to the Umatilla Allottee, No. 113, prepared in compliance with instructions from the Hon. Commissioner of the General Land Office contained in letter dated January 4, 1913. U.S. Surveyor General's Office, Portland, Oregon, January 22, 1913.

4

[Signature]
Surveyor General for Oregon.