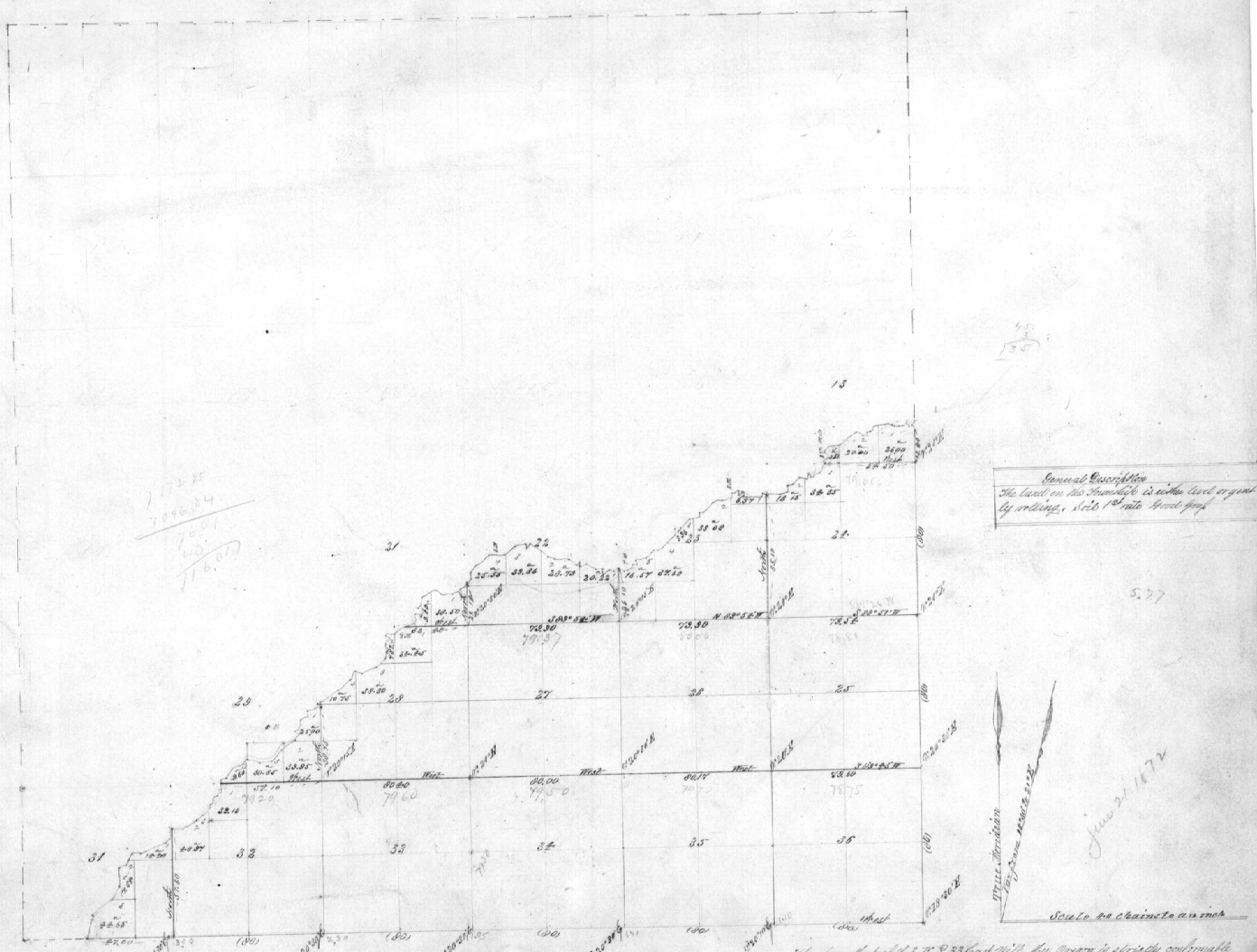


Station	Area
17	20.14
18	22.70
19	22.72
20	21.00
21	22.00
22	22.00
23	21.12
24	21.12
25	21.12
26	21.12
27	21.12
28	21.12
29	21.12
30	21.12
31	21.12
32	21.12
33	21.12
34	21.12
35	21.12
36	21.12
37	21.12
38	21.12
39	21.12
40	21.12
41	21.12
42	21.12
43	21.12
44	21.12
45	21.12
46	21.12
47	21.12
48	21.12
49	21.12
50	21.12
51	21.12
52	21.12
53	21.12
54	21.12
55	21.12
56	21.12
57	21.12
58	21.12
59	21.12
60	21.12
61	21.12
62	21.12
63	21.12
64	21.12
65	21.12
66	21.12
67	21.12
68	21.12
69	21.12
70	21.12
71	21.12
72	21.12
73	21.12
74	21.12
75	21.12
76	21.12
77	21.12
78	21.12
79	21.12
80	21.12
81	21.12
82	21.12
83	21.12
84	21.12
85	21.12
86	21.12
87	21.12
88	21.12
89	21.12
90	21.12
91	21.12
92	21.12
93	21.12
94	21.12
95	21.12
96	21.12
97	21.12
98	21.12
99	21.12
100	21.12
Total	7172.88



General Description
 The land on this Township is within level original
 by order, 1826 1/2 rate level from

Scale in chains to an inch
 June 21 1872

This map of S. 7. E. 33 East Hill, Mr. Oregon is strictly conformable
 to the original field notes of the survey kept on file in this office which
 have been examined and approved
 Surveyor General's Office
 Eugene Ore
 1871

Lines	Contractor	Contract		First Surveyed		Commenced	Completed
		No.	Date	Miles	Chains		
Subdivisions	Z. F. Reedy	162	October 2 1871	10	56	20	
		165					