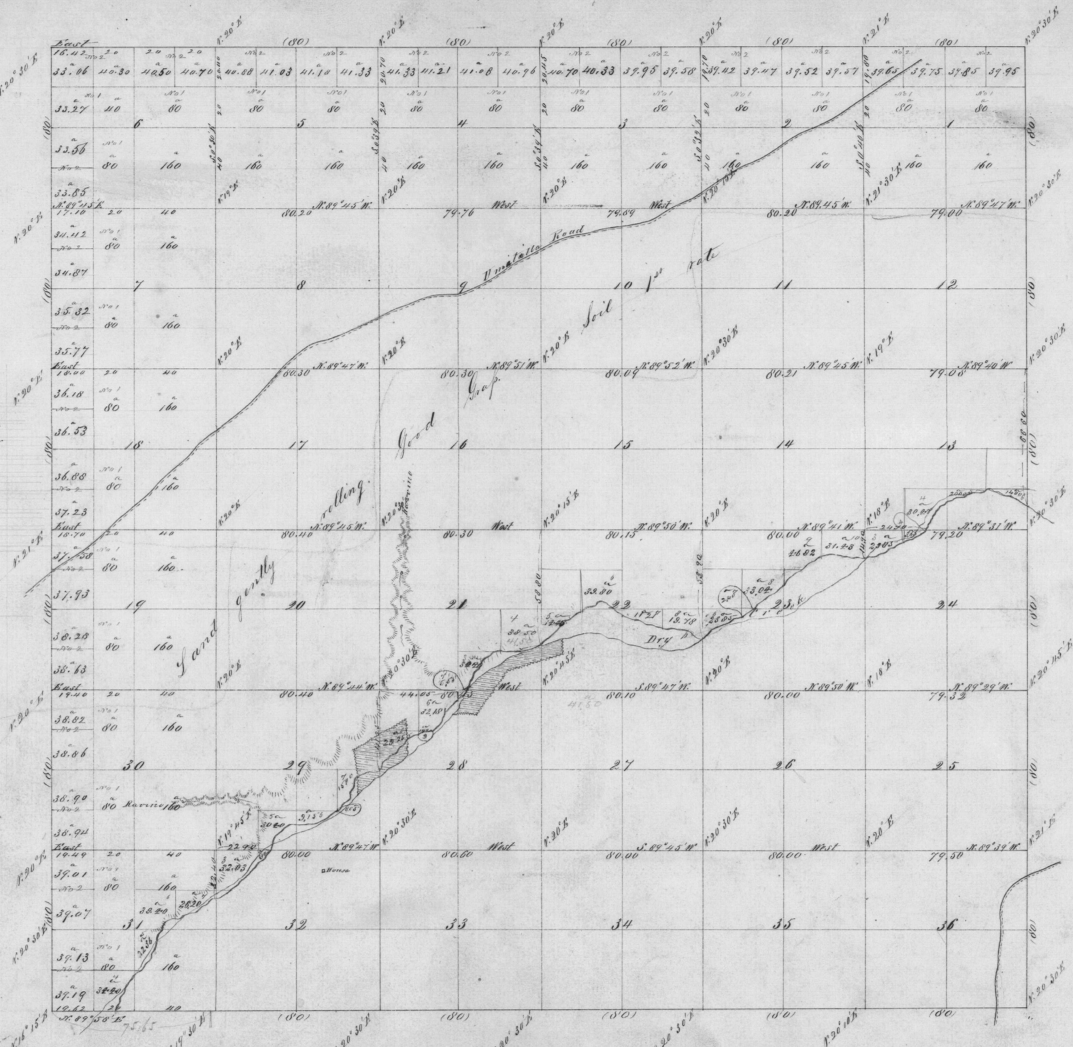


Township No. 3 North Range No. 33 East Willamette Meridian

4162



I certify that the bearings and acreage consequent upon the survey of the west boundary of the Councils Judicial Reservation T. 3 N. R. 33 E. W. 20. 1/2 Oregon as represented on this plat are correct.

Surveyor General's Office  
 Eugene City, Jan 21<sup>st</sup> 1873

H. H. Cole, Jr.  
 Surveyor

Total Area 16000.87

22.067.11  
 16.87.78.19  
 22.973.22  
 71.72.53  
 15808.87

Description of Lines	By Whom Surveyed	Contract No.	Amount of Acres		When Surveyed
			Acres	Other Units	
Subdivisions	Samuel Chapman	107	59	75 19	Nov 11 <sup>th</sup> 1861
Total Acres			22973.22		

The above map of the Survey of Subdivisional lines in T. 3 North Range 33 East Will. Mer. Oregon is hereby confirmed to the field notes of the Surveyors thereof on file in this Office, which have been examined and approved.

Surveyor General's Office  
 Eugene City, Jan. 21<sup>st</sup> 1873

B. J. Rogers  
 Sec. Genl. Oregon