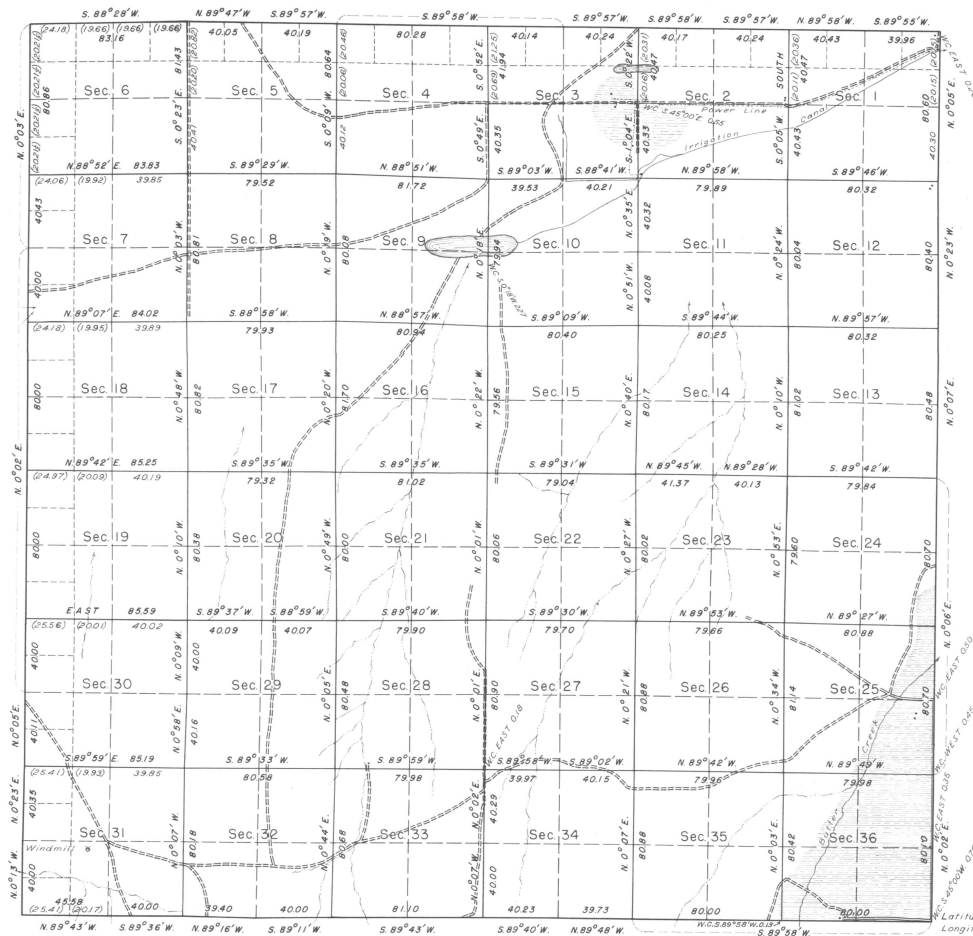


## TOWNSHIP N° 3 NORTH, RANGE N° 27 EAST, OF THE WILLAMETTE MERIDIAN, OREGON.

## DEPENDENT RESURVEY



THIS PLAT OF THE RESURVEY OF T. 3 N., R. 27 E. DELINEATES A RETRACEMENT AND REESTABLISHMENT OF THE LINES OF THE ORIGINAL SURVEY AS SHOWN UPON THE PLAT APPROVED DECEMBER 31, 1860, IN THEIR TRUE ORIGINAL POSITION ACCORDING TO THE BEST AVAILABLE EVIDENCE OF THE POSITION OF THE ORIGINAL CORNERS; ALL DIFFERENCES BETWEEN THE MEASUREMENTS SHOWN ON THE ORIGINAL PLAT AND THOSE DERIVED IN THE RETRACEMENT HAVE BEEN DISTRIBUTED PROPORTIONALLY BETWEEN ACCEPTED CORNERS IN ACCORDANCE WITH SURVEYING RULES; REFERENCE WILL BE MADE TO THE ORIGINAL PLAT FOR THE SHOWING OF THE AREAS AND MORE DETAILED DESCRIPTIONS OF THE VARIOUS SMALLER SUBDIVISIONS.

RESURVEY AUTHORIZED BY LETTER "E" 1699612 DATED NOVEMBER 10, 1937.

UNITED STATES  
DEPARTMENT OF THE INTERIOR  
GENERAL LAND OFFICE  
WASHINGTON, D.C., AUGUST 15, 1941.  
THE SURVEY REPRESENTED BY THIS PLAT HAVING BEEN CORRECTLY EXECUTED IN ACCORDANCE WITH THE REQUIREMENTS OF LAW AND THE REGULATIONS OF THIS OFFICE, IS HEREBY ACCEPTED.

*W. O. C. Samuel*  
ACTING ASSISTANT COMMISSIONER.

OFFICE OF THE SUPERVISOR OF SURVEYS  
DENVER, COLORADO, JULY 31, 1941.  
THE ABOVE PLAT OF TOWNSHIP NO. 3 NORTH, RANGE NO. 27 EAST, OF THE WILLAMETTE MERIDIAN, OREGON, IS STRICTLY CONFORMABLE TO THE FIELD NOTES OF THE SURVEY THEREOF WHICH HAVE BEEN EXAMINED AND APPROVED.

*Wm. H. Johnson*  
SUPERVISOR OF SURVEYS.

Mean Magnetic Declination, 20°30' E. Scale: 40 Chains to an Inch. Area Resurveyed, 23,29017 Acres.

LINES DESIGNATED	BY WHOM SURVEYED	GROUP N°	DATE	MILEAGE		WHEN BEGUN	WHEN COMPLETED
				MLS.	CHS.		
Exterior	Otis O. Gould	217	Jan. 26, 1938	18	13.88	May 3, 1940	May 22, 1940
Subdivisional				60	45.22		
Miscellaneous					2.46		