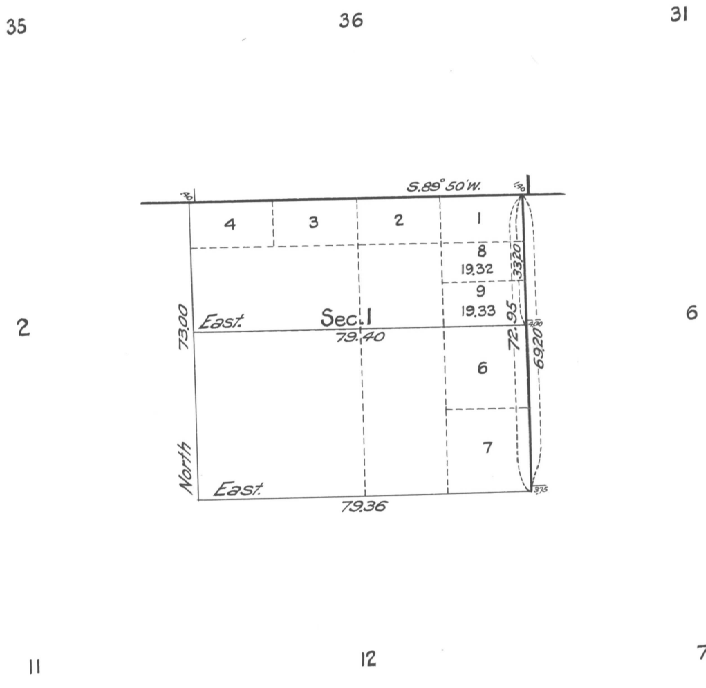


Supplemental Plat
of
Section 1 - Township No 2 North, Range No 35 East of the Willamette Meridian, Oregon.
Superseding plat of said section approved June 14, 1890
Scale: 1 inch = 20 chains.



COPYED BY THE HON. COMMISSIONER G. L. O. September 8, 1921

Office of U.S. Surveyor General,
Portland, Oregon, August 19, 1921.

This supplemental plat showing the areas and legal subdivision of old Lot 5, Section 1, T. 2 N., R. 35 E. of the Willamette Meridian, Oregon, is made in order to accommodate an application for the $\frac{1}{2}$ of said lot, in the Umatilla Indian Reservation, prepared in compliance with instructions from the Hon. Asst. Commissioner of the General Land Office contained in letter "B" JLD dated August 8, 1921.

Edward J. Dowd
U.S. Surveyor General of Oregon.