

TOWNSHIP 2 NORTH, RANGE 33 EAST, OF THE WILLAMETTE MERIDIAN, OREGON

RETRACEMENT OF THE SUBDIVISION OF SECTION LINES IN SECTION 6

The history of surveys pertaining to this retracement is as follows:

In 1864, David P. Thompson, U.S. Deputy Surveyor, surveyed the north, east, and west boundaries of the township, as shown on the official plat of survey approved December 25, 1864.

In 1871, Zenos F. Moody, U.S. Deputy Surveyor, surveyed the north boundary and subdivisional lines as shown on the official plat of survey approved November 11, 1871.

Also in 1871, Zenos F. Moody, U.S. Deputy Surveyor, subdivided sections 1 through 3 as shown on the official plat of survey approved June 21, 1872.

In 1887, James P. Currin and James E. Noland, U.S. Deputy Surveyors, surveyed the subdivisional lines and subdivided certain sections by the three mile method, as shown on the official plat of survey approved June 14, 1890. Currin and Noland make no mention of any of Moody's corners, and their survey supercedes the aforementioned Moody surveys.

In 1889, James P. Currin, U.S. Deputy Surveyor, retraced a portion of the subdivisional lines and surveyed certain Indian Allotment lines, as shown on the official plat of survey approved August 31, 1889.

In 1890, James P. Currin and James E. Noland, U.S. Deputy Surveyors, performed an examination of corners on certain subdivisional lines, the field notes of which were approved June 4, 1890.

In 1917, L.E. Wilkes, U. S. Surveyor, resurveyed a portion of the west boundary and the E. and W. centerline of section 6 as shown in the official field notes approved November 22, 1917.

In 1917, C.E. Redfield, Surveyor for the U.S. Indian Service, resurveyed a portion of the subdivisional lines and subdivided section 6. The field books of the Redfield survey are on file at the Bureau of Indian Affairs, Umatilla Agency Office, in Mission, Oregon.

In 1988-89, Richard L. Johnson, Cadastral Surveyor, resurveyed a portion of the subdivisional lines and subdivision-of-section lines as shown on the official plat of survey approved December 8, 1989.

In 2002-04, Bryan S. Seibold, Cadastral Surveyor, resurveyed a portion of the west boundary subdivision-of-section lines in section 6 as shown on the official plat of survey accepted September 7, 2004.

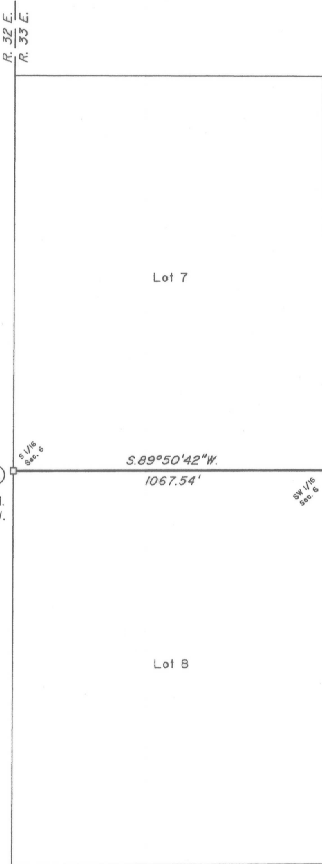
I, David A. Schlaich, Land Surveyor, U. S. Forest Service, HEREBY CERTIFY upon honor, that in pursuance of special instructions bearing the date of the sixteenth day of March, 2007, I have retraced a portion of the subdivision-of-section lines in section 6, Township 2 North, Range 33 East, of the Willamette Meridian, in the State of Oregon, which is represented upon this plat as having been executed by me and under my direction. Said retracement has been made in strict conformity with said special instructions, the Manual of Instructions for the Survey of the Public Lands of the United States, and in specific manner described upon this plat.

David A. Schlaich
Cadastral Surveyor

January 26, 2010
Date



Latitude 45°40'43.483"N
Longitude 118°44'43.352"W
(NAD 1983 (NSRS 2007))



(A) The S 1/16 sec. cor. of sec. 6, on the W. bdy. of the Twp., perpetuated by Bryan Seibold, in 2002, monumented with an iron rod, 5/8 in. diam., firmly set, flush with the ground, with aluminum cap mkd.

S 1/16
S 6
2002

from which a new accessory

A power pole, 10 ins. diam., bears N. 22° E., 49.9 ft. dist., with sign mkd. 2N33E 060200, with 2 1/2 inch x 1/4 inch magnetic nail (Mag Nail), driven at the base on right side center.

Set aluminum U channel post, 6 ft. long, with location poster, 3.0 ft., E., from the iron rod.

From this corner, a metal post, at the NW. corner of a chain link fence extending E. and S., surrounding a cellular wireless telephone tower, bears S. 88°53'57" E., 464.26 ft. dist.

(B) The SW 1/16 sec. cor. of sec. 6, established by Bryan Seibold, in 2004, monumented with a stainless steel post, 2 1/2 ins. diam., firmly set, top 6 ins. below ground, with brass cap mkd.

SW 1/16
S 6
2004

from which new accessories:

A magnet, in an orange plastic case, buried 24 ins. in the ground, bears S. 23°25'22" E., 11.9 ft. dist.

A stainless steel post, 28 ins. long, 2 1/2 ins. diam., set 24 ins. in the ground, for reference monument bears S. 9°05'55" W., 9.25 ft. dist., with brass cap mkd. RM SW1/16 SE NS-05-55E 9.25 FT TO COR 2008, with end arrow pointing to the corner. Deposit a magnet, in a pink plastic case, at the base of reference monument.

Set aluminum U channel post, 6 ft. long, with location poster, 10.2 ft., S. 9° W., from the stainless steel post.

From this corner, a metal post, at the NE. corner of a chain link fence extending S. and W., surrounding a cellular wireless telephone tower, bears S. 88°45'42" W., 555.64 ft. dist.

The corner is located, 3.0 ft., N., of the SW. edge of a wheat field.

This plat represents the entire survey record of the retracement of a portion of the subdivision-of-section lines in section 6, T. 2 N., R. 33 E., Willamette Meridian, Oregon.

The survey was performed using a combination of GPS static and Real Time Kinematic measurements. The GPS measurements utilized dual frequency carrier phase receivers and were executed in accordance with the 'Standards and Guidelines for Cadastral Surveys Using Global Positioning System Methods', dated May of 2001, published by the U.S.D.A. Forest Service and U.S.D.I. Bureau of Land Management. The adjusted bearings and distances are reported to the nearest second and 0.01 foot.

The geographic position in (NAD 1983 (NSRS2007)) shown hereon, was determined utilizing NSRS CORS stations "PENDLETON" AND "ATHENA"

The lottings and areas are as shown on the plat approved June 14, 1890.

The direction of the lines are based on the true meridian as determined by Global Positioning System (GPS) measurements.

The retracement was executed by David A. Schlaich, Land Surveyor, U. S. Forest Service, beginning September 3, 2008 and completed September 8, 2008, pursuant to Special Instructions dated March 16, 2007, approved March 21, 2007 and Assignment Instructions dated August 6, 2008 under Group Number 23000817, Oregon. He was assisted by Allen Madrill, Archaeologist, U. S. Forest Service.

The retracement data shown hereon were thoroughly verified and only the true line and corner descriptions are given.

LEGEND
□ Corner previously established or reestablished

UNITED STATES DEPARTMENT OF THE INTERIOR
BUREAU OF LAND MANAGEMENT

Portland, Oregon

The retracement represented by this plat, having been correctly executed in accordance with the requirements of law and the regulations of this Bureau, is hereby accepted.

For the Director

Mary J. M. Hart

Chief Cadastral Surveyor of Oregon

January 28, 2010
Date

OFFICIALLY FILED: 3/16/2010