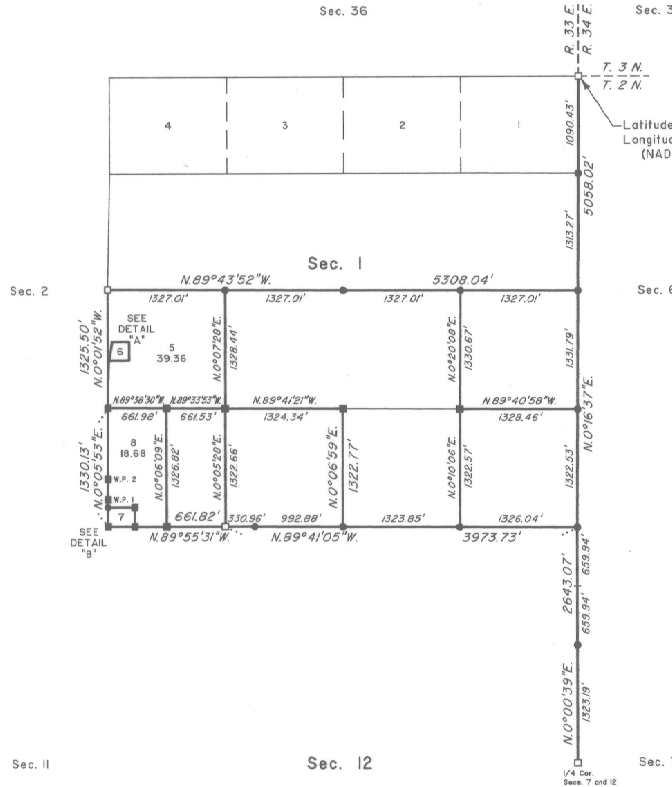
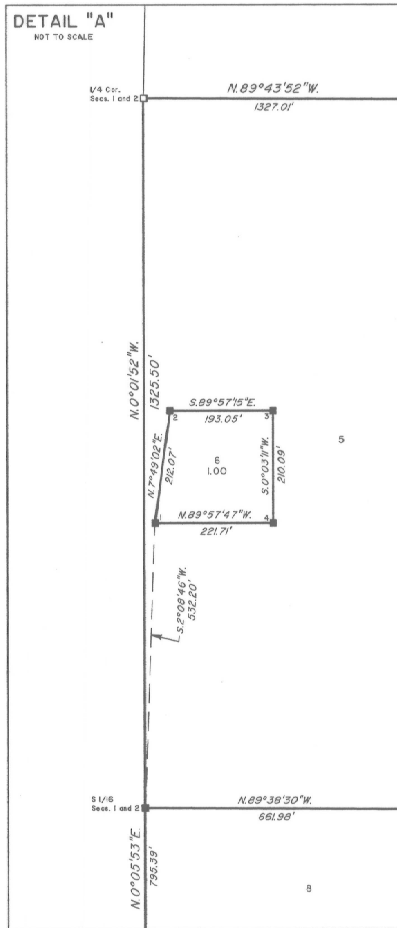


TOWNSHIP 2 NORTH, RANGE 33 EAST, OF THE WILLAMETTE MERIDIAN, OREGON

DEPENDENT RESURVEY, METES-AND-BOUNDS SURVEY, AND SUBDIVISION OF SECTION 1

LEGAL SUBDIVISION	OFFICIAL ACRES
SECTION 1	
E1/2 SW1/4 SW1/4	20.12
SE1/4 SW1/4	40.20
NE1/4 SE1/4	40.57
SE1/4 SE1/4	40.29



Latitude 45°41'19.14\"N.
Longitude 118°37'17.783\"W.
(NAD 1983 (2007))

A history of surveys is contained in the field notes.

This plat represents a dependent resurvey of a portion of the east boundary, subdivision lines, and subdivision-of-section lines of section 1, T. 2 N., R. 33 E., Willamette Meridian, Oregon, designed to restore the corners in their true original locations according to the best available evidence, and the subdivision of section 1 and the metes-and-bounds surveys of certain lots in section 1.

Measured distances and directions have been adjusted by computer software that incorporates a least squares adjustment routine. The adjusted bearings and distances are reported to the nearest second and 0.01 foot.

Actual quantity acreages have been returned for Federal interest lands where indicated. Changes in the official acreage of land described by aliquot part or lot number do not alter its description. Further subdivision of aliquot parts shall be in accordance with the Manual. Further subdivision of official lots may only be by supplemental plat or official survey. Official acreage and lot designations of Federal interest lands not affected by this survey are as shown on the plats approved November 11, 1871 and June 14, 1890.

The survey was executed by David A. Schlaich, Land Surveyor, U. S. Forest Service, beginning April 22, 2008 and completed June 3, 2008, pursuant to Special Instructions dated April 8, 2008, and Supplemental Special Instructions dated May 19, 2008 under Group Number 2216, Oregon.

LEGEND

- Corner previously established or reestablished
- Corner previously established or reestablished; remonumented this survey
- Corner established or reestablished this survey
- + Calculated position not monumented

UNITED STATES DEPARTMENT OF THE INTERIOR
BUREAU OF LAND MANAGEMENT

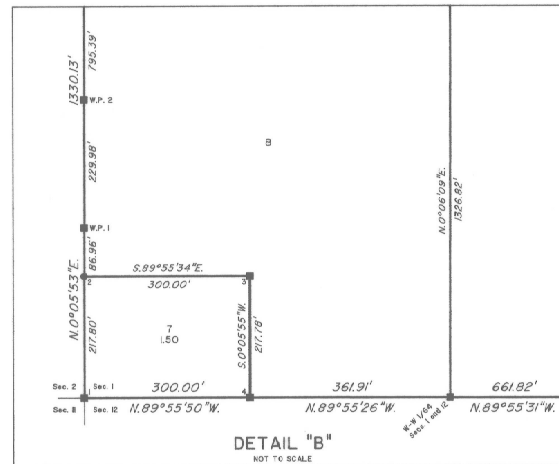
Portland, Oregon

This plat is strictly conformable to the approved field notes, and the survey, having been correctly executed in accordance with the requirements of law and the regulations of this Bureau, is hereby accepted.

For the Director

Mary J. M. Hartz

Chief Cadastral Surveyor of Oregon



January 27, 2010
Date

OFFICIALLY FILED: 3/16/2010