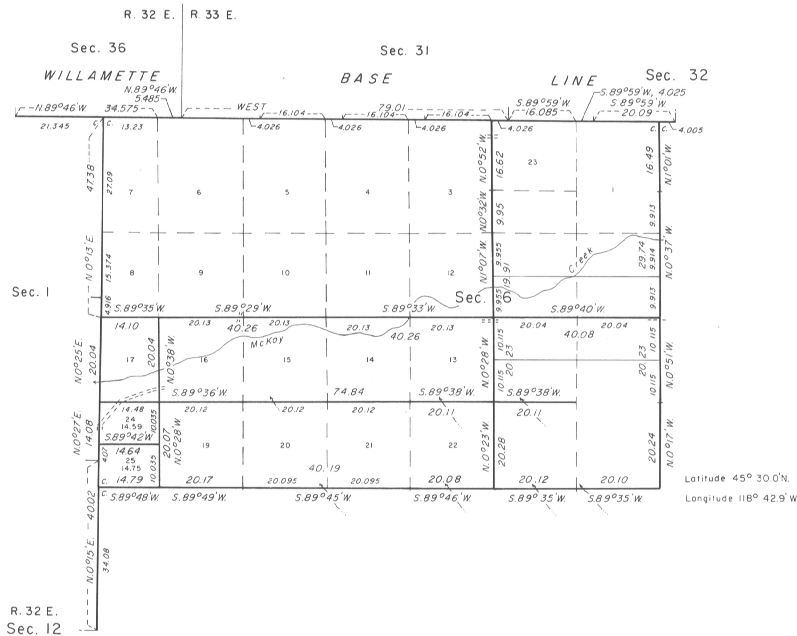


# TOWNSHIP I SOUTH, RANGE 33 EAST, OF THE WILLAMETTE MERIDIAN, OREGON

## DEPENDENT RESURVEY AND SUBDIVISION

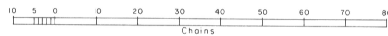


A history of surveys is contained in the field notes.

This plat represents a dependent resurvey of a portion of the Willamette Base Line, through Rs. 32 and 33 E., and a portion of the west boundary and subdivisional lines, designed to restore the corners in their true original locations according to the best available evidence, and the subdivision of section 6, T. 1 S., R. 33 E., Willamette Meridian, Oregon.

Except as indicated hereon, the lottings and areas are as shown on the plat approved June 14, 1890 and supplemental plat accepted February 18, 1919.

Survey executed by Ronald W. Scherler Cadastral Surveyor, beginning November 2, 1976 and completed November 8, 1976, pursuant to Special Instructions dated October 28, 1976, for Group No. 921, Oregon.



NOTE: The following corners are not monumented.

- E. 1/16, 1/4, and W. 1/16 of sec. 31;
- W. 1/16, 1/16-80, and 1/16-100 of sec. 6;
- 1/4 of sec. 1; N. 1/16 of sec. 6;
- 1/16-80 of secs. 6 and 7;
- N-S 1/64, S-N 1/64, and N. 1/16 of secs. 5 and 6;
- center N-S 1/64, center S-N 1/64, center 1/16-100 S. 1/16-100, and S-S 1/64-120 of sec. 6.

UNITED STATES DEPARTMENT OF THE INTERIOR  
BUREAU OF LAND MANAGEMENT  
Denver, Colorado  
October 6, 1980

This plat is strictly conformable to the approved field notes, and the survey, having been correctly executed in accordance with the requirements of law and the regulations of this Bureau, is hereby accepted.

For the Director

*[Signature]*

Chief, Cadastral Survey  
Examination and Approval Staff