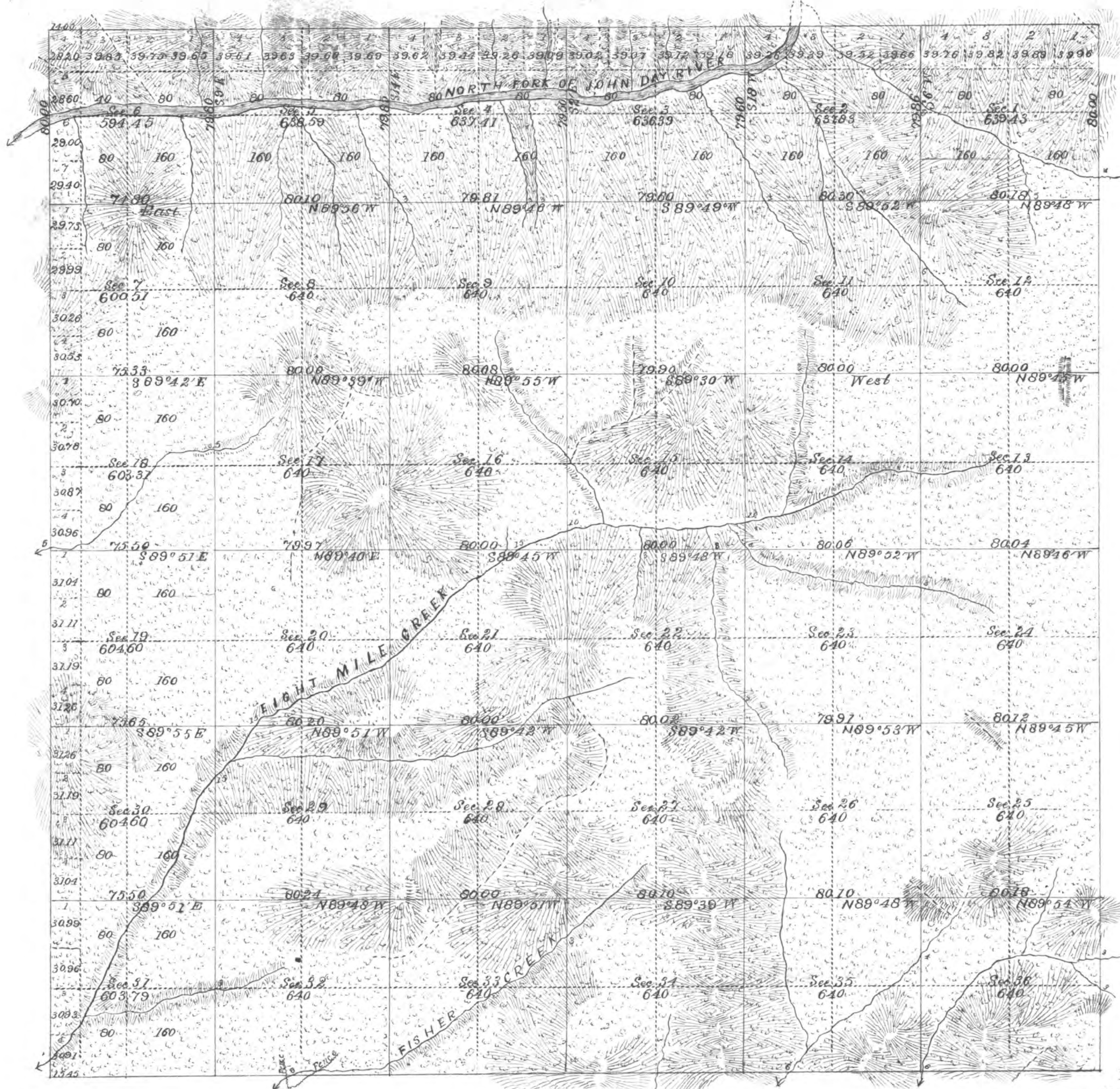


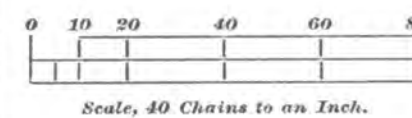
Township No. 7 South Range No. 30 East Willamette Meridian, Oregon.

3953



SURVEYS DESIGNATED.	BY WHOM SURVEYED.	NO.	DATE OF CONTRACT.	AMOUNT OF SURVEYS.			WHEN SURVEYED.	MEAN DECLINATION.
				Miles.	Chains.	Links.		
Township Lines	Meldrum and Campbell	380	March 19 1881					
Subdivisions	do do do	do	do do do	59	56	30	May 29 to June 10 1880	Mean 19° 30' East

Total number of Acres 22,800 91



The above Map of Subdivisions of Township No. 7 South of Range No. 30 East of the Willamette Meridian, Oregon, is strictly conformable to the Field Notes of the survey thereof on file in this Office, which have been examined and approved.

U. S. Surveyor-General's Office,
Portland, Oregon,

Nov 23^d, 1881. James C. Tolman
Surveyor-General of Oregon