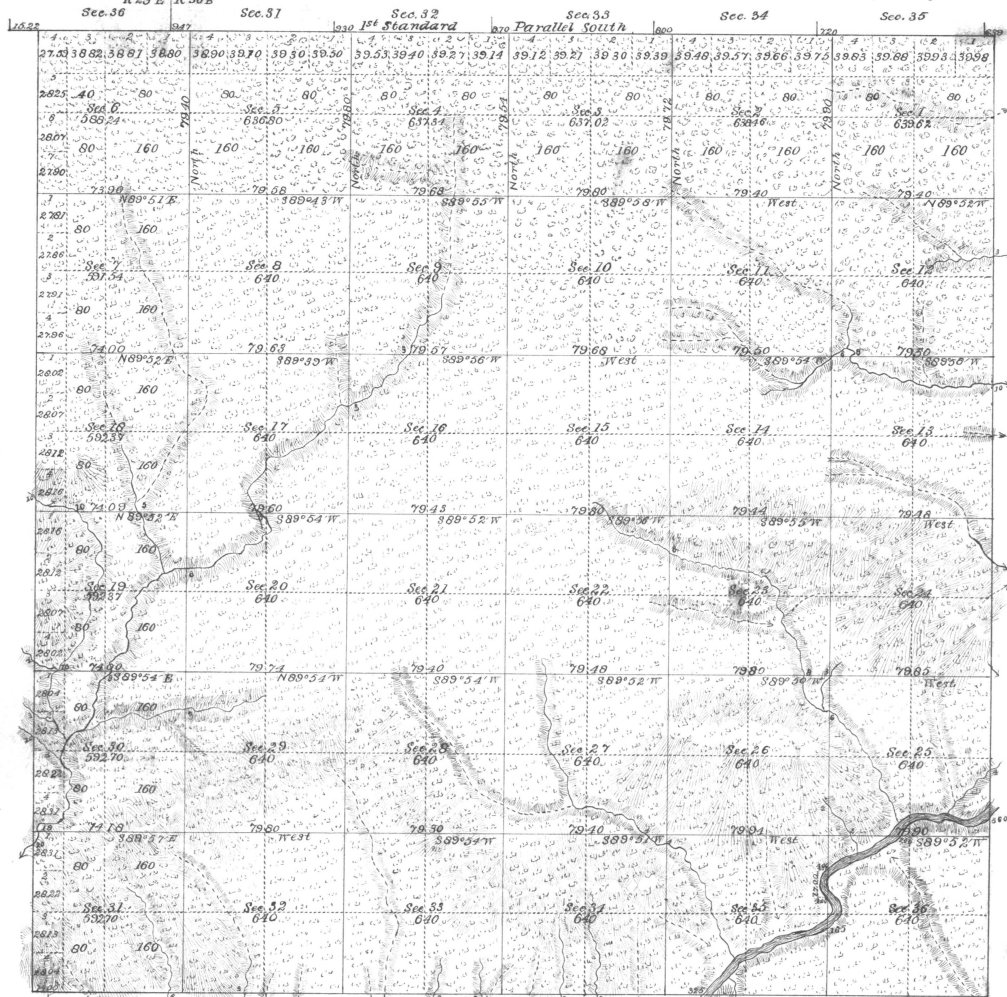
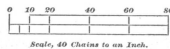


Township No. 6 South Range No. 30 East Willamette Meridian, Oregon.



SURVEYS DESIGNATED.	BY WHOM SURVEYED.	NO.	DATE OF CONTRACT.	AMOUNT OF SURVEYS.			WHEN SURVEYED.	BEAR DECLINATION.
				Mils.	Chains.	Links.		
Township Lanes	Weldrum & Campbell	380	March 19/1881					
Subdivisions	do do do do	do do do do	do do do do	59	38	63	June 7 to 27 1881	20° 15' E.
Intersections	do do do do	do do do do	do do do do		64	28		

Total number of Acres 22,739.10



The above Map of Subdivisional Lines.....of Township No. 6 South.....of Range No. 30 East.....of the Willamette Meridian, Oregon, is strictly conformable to the Field Notes of the survey thereof on file in this Office, which have been examined and approved. U. S. Surveyor-General's Office, Portland, Oregon,

November 23 1881. James C. Tolman Surveyor-General of Oregon.