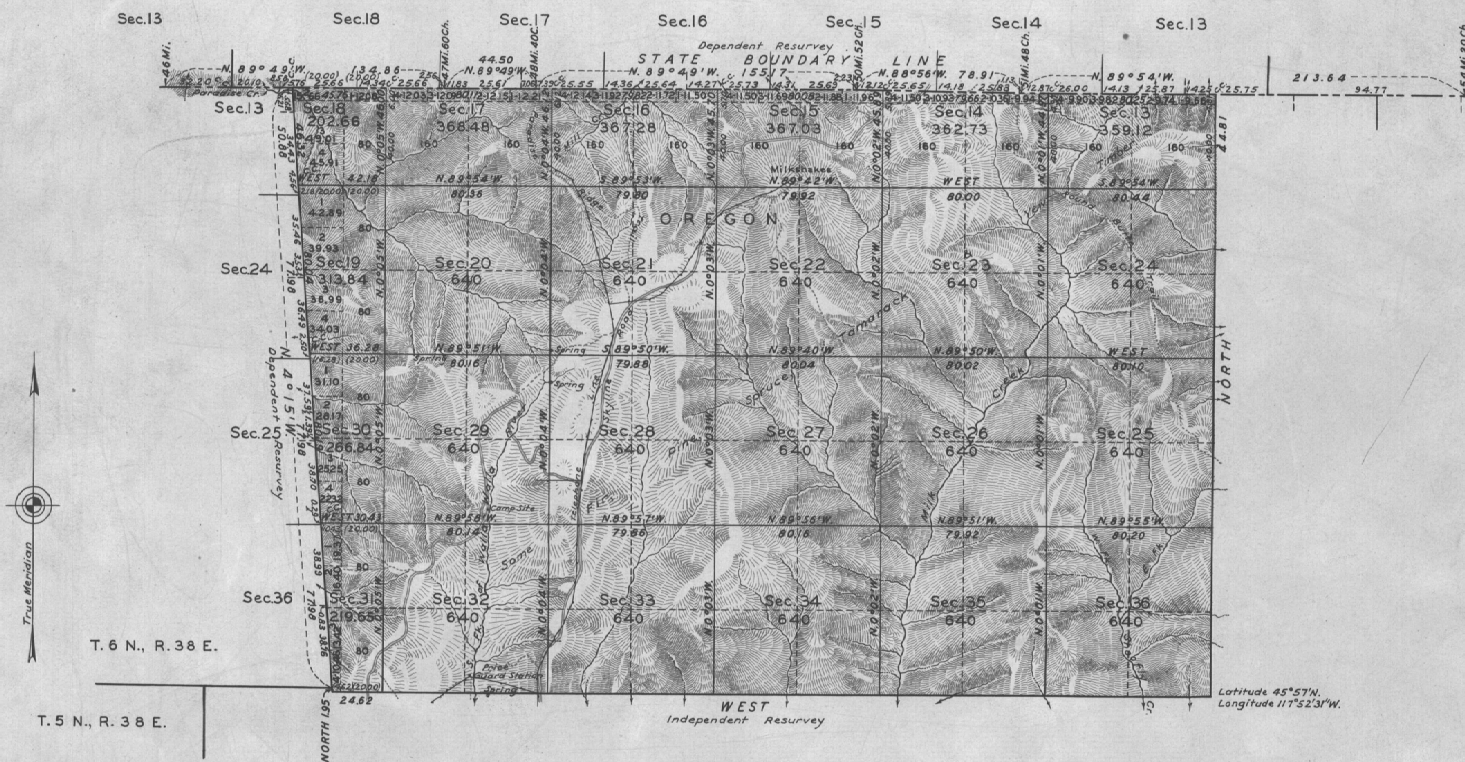


TOWNSHIP No. 6 NORTH, RANGE No. 39 EAST, OF THE WILLAMETTE MERIDIAN, OREGON.

WASHINGTON



LINES DESIGNATED BY WHOM SURVEYED	GROUP No.	DATE	MILEAGE		WHEN SURVEYED	
			MLS.	CHS.	BEGUN	COMPLETED
Exterior			14	4.83		
Subdivisional	Otis O. Gould	135 April 11, 1929	34	18.57	Aug. 1, 1932	Sept. 13, 1932
Miscellaneous			3	31.36		

Office of U.S. Supervisor of Surveys,
Denver, Colorado, March 30, 1936.
The above plat of Township No. 6 North, Range No. 39 East,
of the Willamette Meridian, Oregon, is strictly conformable
to the field notes of the survey thereof which have
been examined and approved.

Wm. H. Pomeroy
U. S. Supervisor of Surveys.

DEPARTMENT OF THE INTERIOR
GENERAL LAND OFFICE
Washington, D.C., September 14, 1936.
The survey represented by this plat
having been correctly executed in accordance
with the requirements of law and the regulations
of this office, is hereby accepted.

Arthur H. Frank
Assistant Commissioner.

*FWJ
LAX*