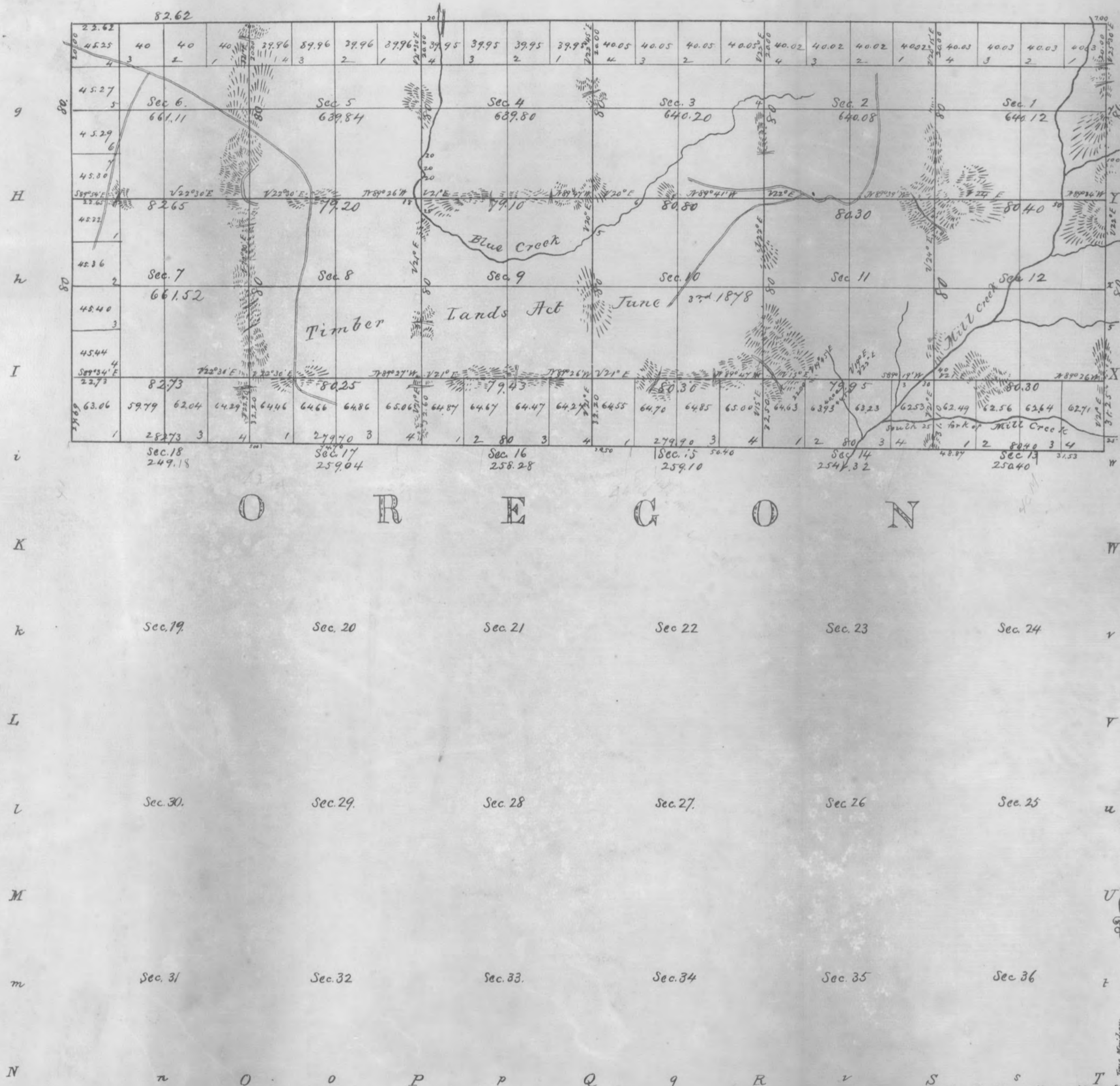


Received with Sur Gen's Letter of Nov 17, 1879

TOWNSHIP N° 6 North RANGE N° 38 East Willamette MERIDIAN  
 G f F e E d D c C b B a A



Total number of Acres 9,252.99

Surveys Designated	By Whom Surveyed	Date of Contract	Amount of Surveys	When Surveyed
Front N & S Sides Township Lines	Francis Falckner	16th Dec. 1878	27 6 01	13th June 1879
Subdivisions	"	"	"	24th August

The above Map of Township N° 6 North of Range N° 38 East of the Willamette Meridian Washington Territory is strictly conformable to the field notes of the survey thereof on file in this Office, which have been examined and approved  
 Surveyor General's Office } W. McMichael  
 Olympia W. T. Nov 17, 1879 } Sur. Gen.

Department of the Interior  
 General Land Office  
 Feb 4 - 1884  
 I hereby certify that the above is a true photo-lithographic copy of the original on file in this Office.  
 [Signature]  
 Acting Commissioner