

TOWNSHIP 6 NORTH, RANGE 37 EAST, OF THE WILLAMETTE MERIDIAN, OREGON.

DEPENDENT RESURVEY AND SUBDIVISION OF SECTION 23

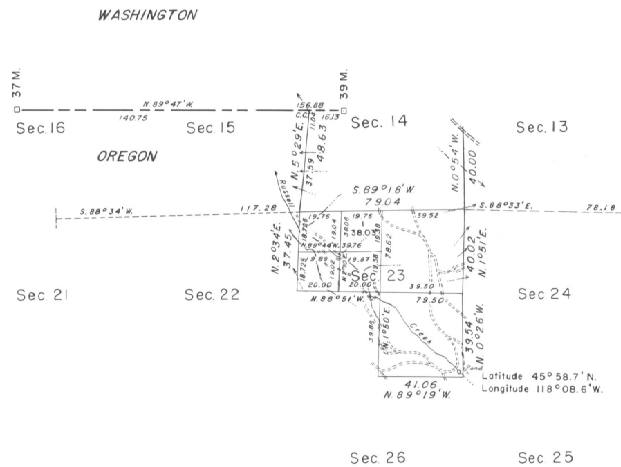
This plat represents a retracement and reestablishment of a portion of the subdivisional lines, designed to restore the corners in their true original locations according to the best available evidence, and, a subdivision of section 23. Except as modified herein, subdivisions are shown hereon, the lottings and areas are as shown on the plat approved September 1, 1873.

The Oregon and Washington State Boundary, which forms the north boundary of this fractional township, was surveyed by Daniel G. Major in 1864. The east boundary was completed and the subdivisional lines were surveyed by George Williams in 1873.

Survey examined by C. Albert White, August 10 to September 30, 1965, under Special Instructions dated April 21, 1965, which provide for the surveys included under Group No. 578, Oregon.



Mean  
Magnetic  
Declination  
00°00' East



0 10 20 30 40 50 60 70 80  
Chains  
Area resurvey: 478.05 acres

UNITED STATES DEPARTMENT OF THE INTERIOR  
BUREAU OF LAND MANAGEMENT  
Washington, D. C. July 8, 1966

This plat is strictly conformable to the approved field notes, and the survey, having been correctly executed in accordance with the requirements of law and the regulations of this Bureau, is hereby accepted.

For the Director

A handwritten signature in cursive script, appearing to read 'C. E. Remington'.

Chief, Division of Engineering

Timber in this area consists of Douglas fir, white fir, yellow pine, tamarack, and alder.