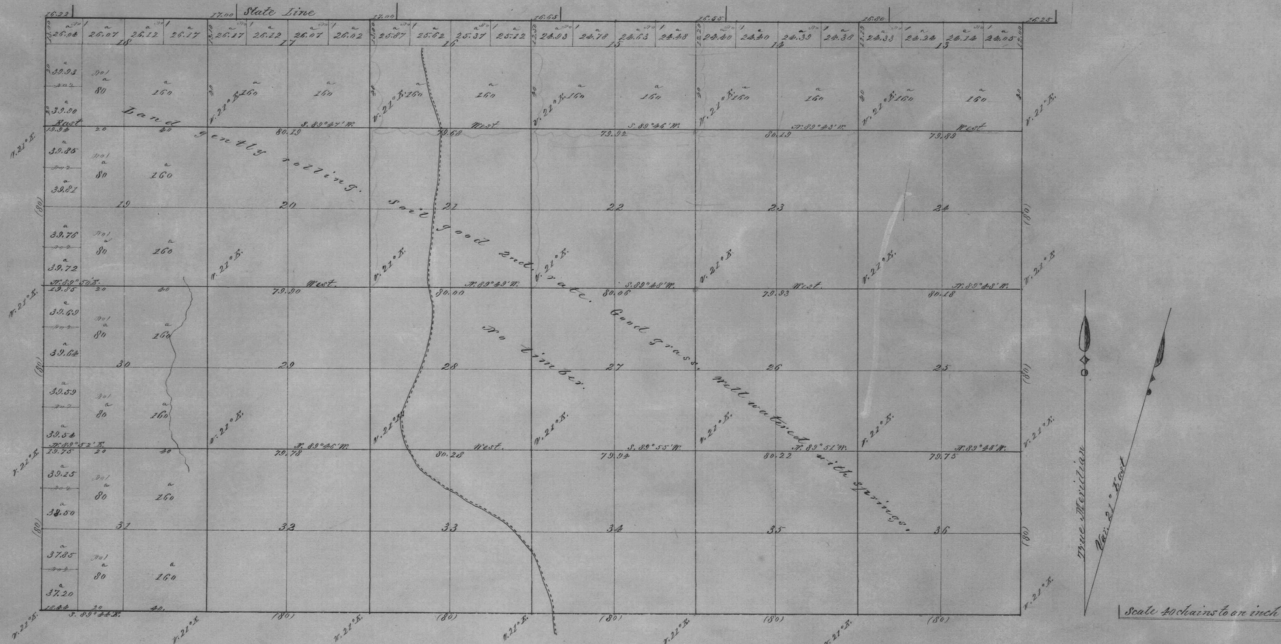


Township No. 6 North Range No. 36 East Willamette Meridian.



Description of Lines	Name of Deputy	Contract		Amt. Surveyed Mts. Chained	When surveyed
		No.	Date		
Subdivisions	Orville Lewis	119	Feb. 7, 1855	37 26 33	April 5, 1855
Total acres 14038.14					

The above map of the Subdivisional lines of Twp. 6 N., Range 36 East Will.
Mer. Oregon, is strictly conformable to the field notes of the survey then of on
file in this office, which have been examined and approved.

Surveyors General's Office
Oregon City, Aug. 24, 1855

E. L. Applegate
Surveyor General.