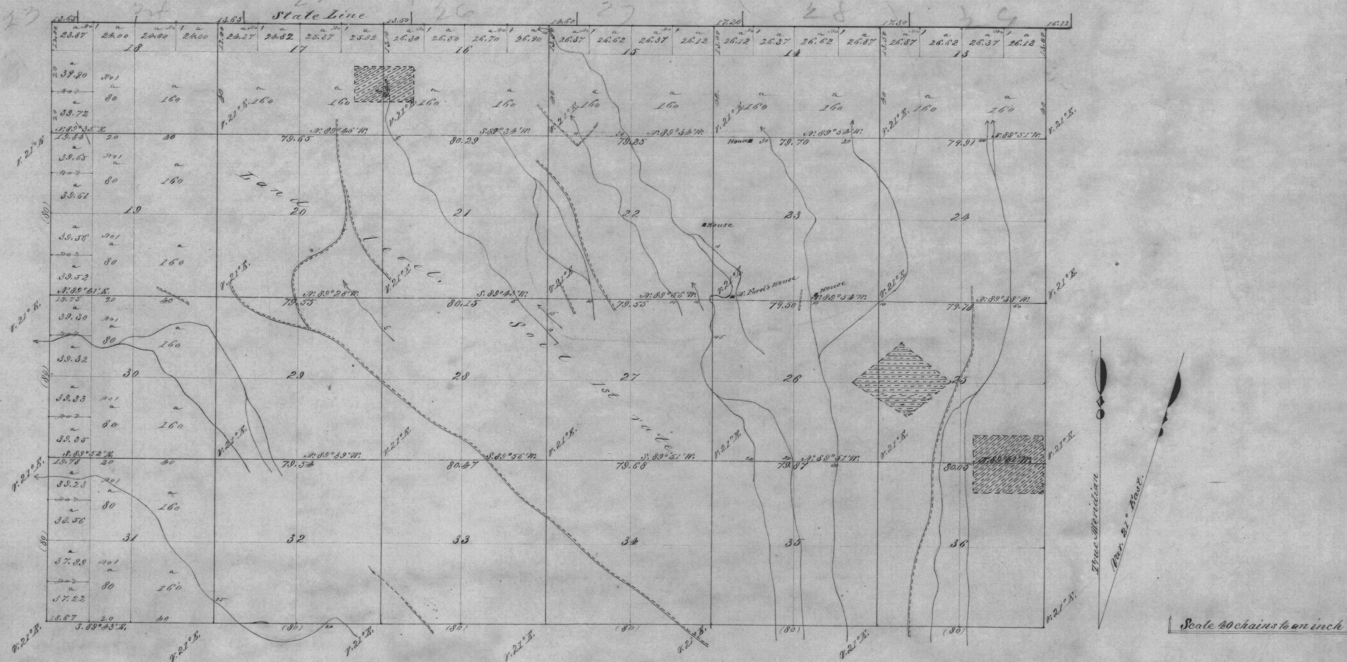


Township No. 6 North Range No 35 East Will. Mer.



The above map of Township No 6 North Range No. 35 East, Willamette Meridian, Oregon, is strictly conformable to the field notes of the survey thereof on file in this office, which have been examined and approved.
 Surveyor General's Office,
 Eugene City, Aug. 24, 1865.

E. L. Applegate
 Sur. General of Oregon.

Surveys designated	Name of Tract	Contract		Amount surveyed			When surveyed
		No.	Date	Acres	Chains	Links	
Subdivisions	Odell & Lewis	110	Feb. 7, 1865.	57	17	66	March 25, 1865.
Total Acres		10040.65					