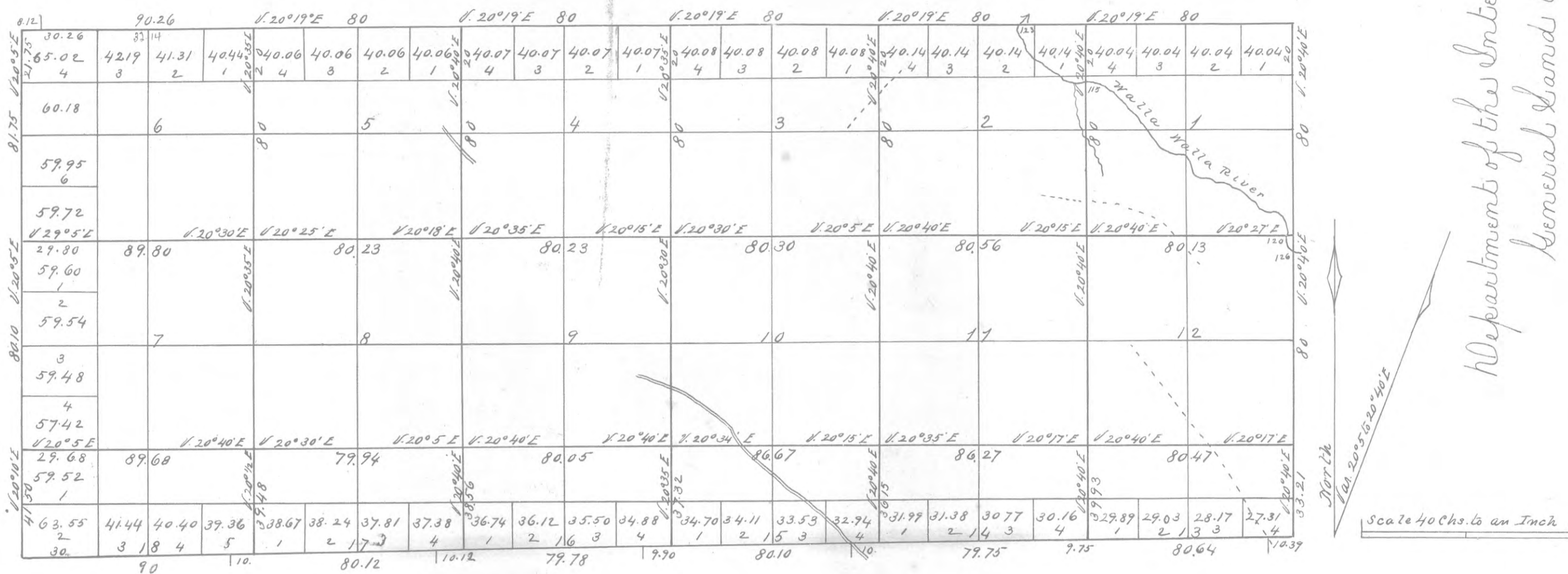


Township No 6 North Range No 32 East Willamette Meridian.

Rec<sup>d</sup> with Sur. Gen's Letter of Jan'y 30-1867

See Map showing accuracy of West boundary and Course letter Mar. 20. 1886.



Department of the Interior  
General Land Office

Mar 10 - 1884

I hereby certify that the above is a true photo-lithographic copy of the original on file in this Office.

*[Signature]*  
Acting Commissioner.

Survey designated	By whom surveyed	Contract		Amd of Survey			When surveyed	When chargeable in the Surveyor's Genl accounts
		No	Date	Miles	Chains	Links		
Subdivisions	Daniel S. Major	72	5 <sup>th</sup> May 1863	24	48	76	Apr 23 to May 6/64	3 <sup>rd</sup> Quarter 1867
Exteriors	" " "			2	41	50	March 7 <sup>th</sup> 1864	
Total No of Acres		9,682						

The above Map of Township No 6 North of Range No 32 East of the Willamette Meridian in the Territory of Washington is strictly conformable to the field notes of the survey thereof on file in this office which have been examined and approved.  
Surveyor General's office  
Olympia W.T. Jan'y 30<sup>th</sup> 1867.

*[Signature]*  
Surveyor General W.T.