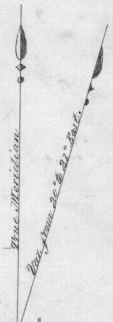
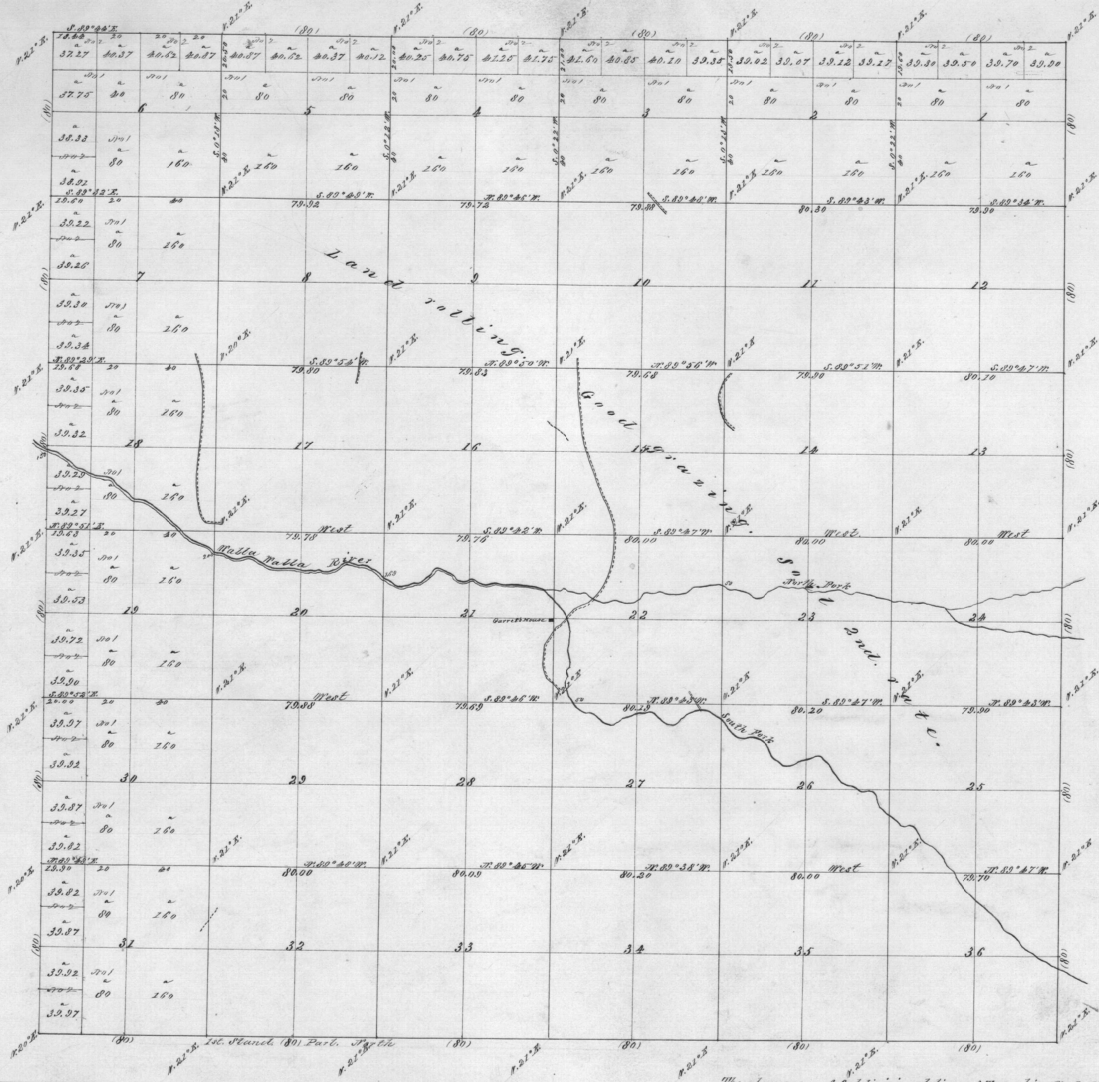


Township No. 5 North Range No. 36 East Will. Mer.



Scale 40 chains to an inch.

Description of lines	Name of Deputy	Contract		Amount Surveyed		When surveyed
		No.	Date	Miles	Chains	
Subdivisions	O'Call & Lewis	110	Feb 7, 1865	5.9	77 83	May 12, 1865.
Total acres 23038.79						

The above map of Subdivisional lines of Township No. 5 North, Range No. 36 East Willamette Meridian, Oregon, is strictly conformable to the field notes of the survey hereof on file in this office, which have been examined and approved.

Surveyor General's Office
Eugene City, Aug. 24, 1865.

E. L. Applegate
Surveyor General.