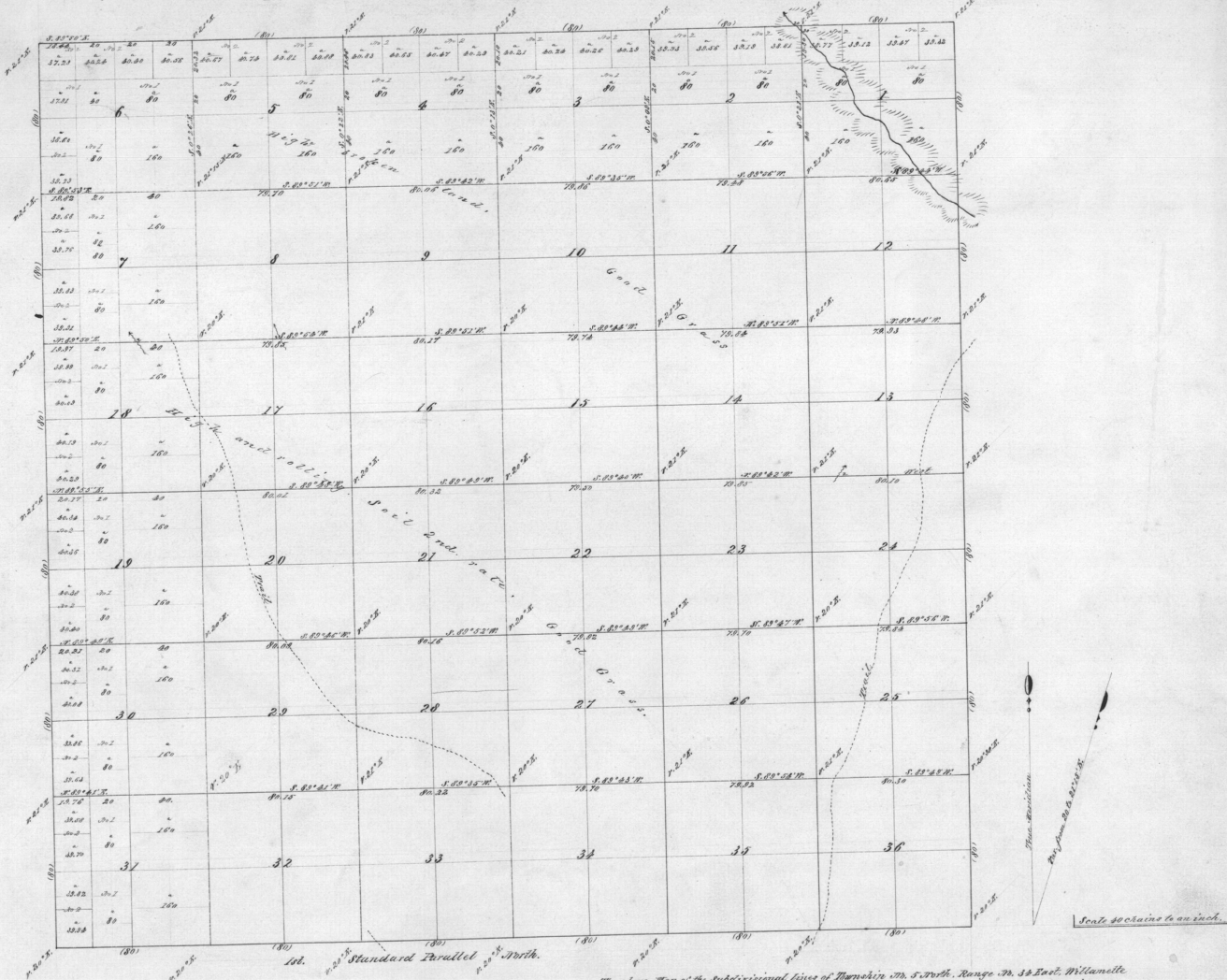


Township No. 5 North Range No. 34 East Willamette Mer.



The above Map of the Subdivision lines of Township No. 5 North, Range No. 34 East, Willamette Meridian, Oregon, is strictly conformable to the field notes of the survey thereof on file in this office, which have been examined and approved.
 Surveyor General's Office
 Eugene City Aug 24 1863
 E. L. Applegate
 Sur. Genl. of Oregon.

Description of Lines	Name of Tract	Acres	Continental		Amount Surveyed		When completed	
			No.	Date	Acres	Chain Sinks		
Subdivisions	Odell & Lewis	170	25	7th. 1865	39	29	32	Apr. 1868. 1865.
Total Acres 23055.44								