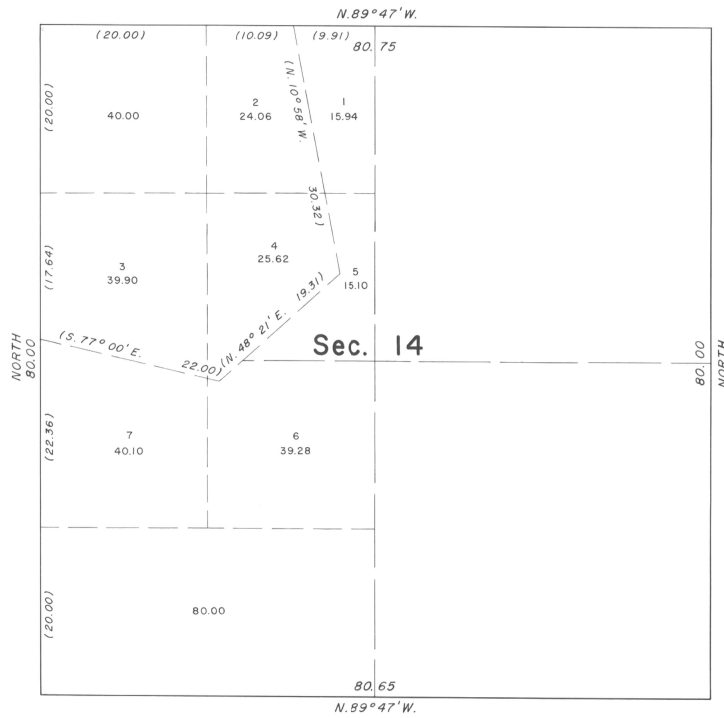


TOWNSHIP 5 NORTH, RANGE 28 EAST, OF THE WILLAMETTE MERIDIAN, OREGON. SUPPLEMENTAL PLAT



This plat, showing amended lotting in Section 14, Township 5 North, Range 28 East, Willamette Meridian, Oregon, is based upon the plat approved December 7, 1861.

UNITED STATES DEPARTMENT OF THE INTERIOR
BUREAU OF LAND MANAGEMENT
Washington, D. C. August 3, 1959

This plat, showing amended lotting, is based upon the official records, and having been correctly prepared in accordance with the regulations, is hereby accepted.

For the Director

Earl S. Harrington
Cadastral Engineering Staff Officer