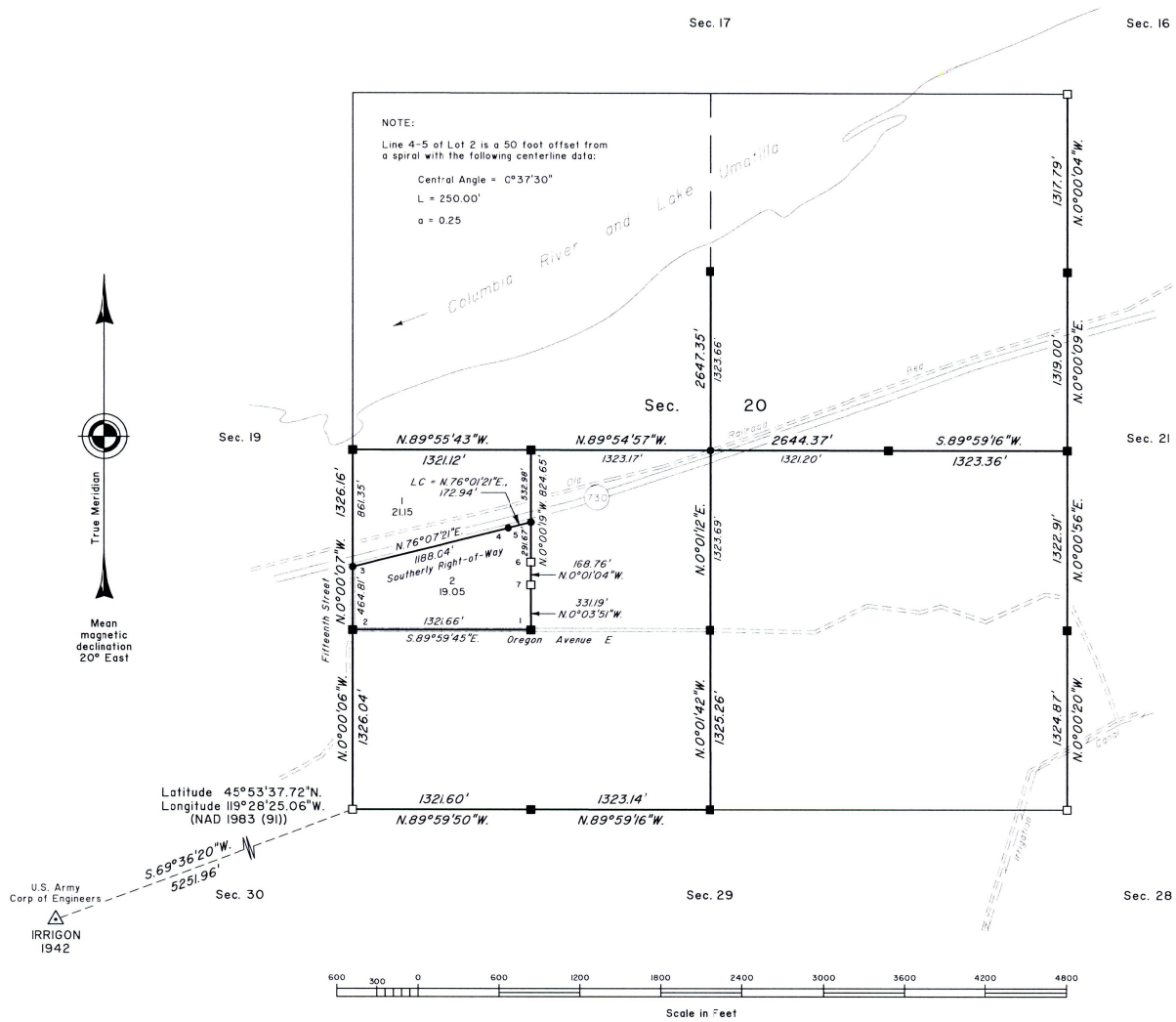


TOWNSHIP 5 NORTH, RANGE 27 EAST, OF THE WILLAMETTE MERIDIAN, OREGON
 CORRECTIVE DEPENDENT RESURVEY, DEPENDENT RESURVEY, SUBDIVISION OF SECTION 20 AND SURVEY



A history of surveys is contained in the field notes.

This plat represents a corrective dependent resurvey of a portion of the subdivisional lines, and the dependent resurvey of a portion of the subdivisional lines, T. 5 N., R. 27 E., Willamette Meridian, Oregon, designed to restore the corners in their true original locations according to the best available evidence, the subdivision of section 20, and the metes-and-bounds survey of the line between Lots 1 and 2 in section 20.

Measured distances and directions have been adjusted by Cadastral Measurement Management (CMM), computer software that incorporates a least squares adjustment routine. The adjusted bearings and distances are reported to the nearest second and 0.01 foot.

Except as shown hereon, the lottings and areas are as shown on the plat approved December 7, 1861.

The survey was executed by Bryan S. Seibold, Cadastral Surveyor, beginning March 13, 2000, and completed June 21, 2000, pursuant to Special Instructions dated November 2, 1999, under Group Number 1932, Oregon.

Timber in this area consists of alder, poplar and russion olive.

The tie to the geodetic control station is reported as mean bearing and sea level distance.

UNITED STATES DEPARTMENT OF THE INTERIOR
 BUREAU OF LAND MANAGEMENT

Portland, Oregon June 4, 2001

This plat is strictly conformable to the approved field notes, and the survey, having been correctly executed in accordance with the requirements of law and the regulations of this Bureau, is hereby accepted.

For the Director
Wayne W. Hardner
 Chief Cadastral Surveyor of Oregon