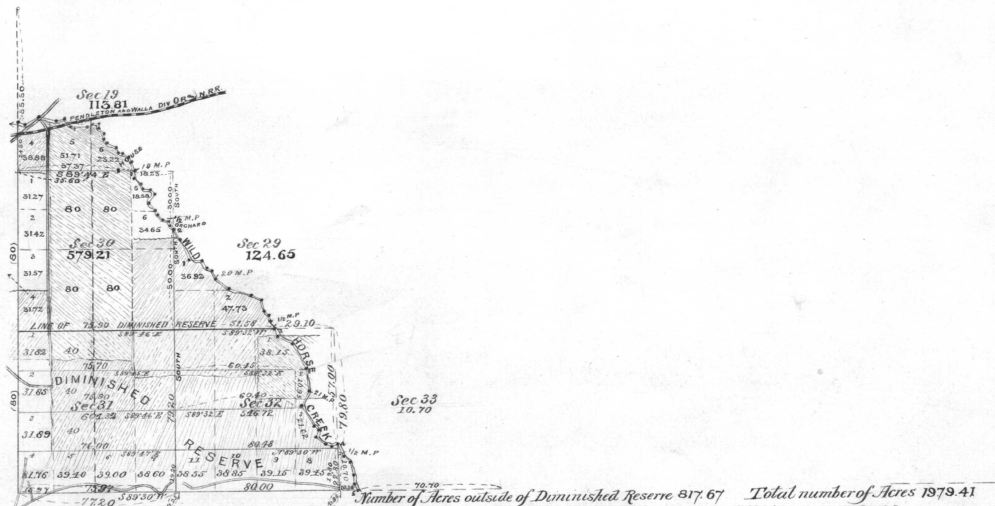


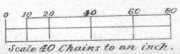
ACCEPTED BY THE HON. COMMISSIONER G. L. G. Jany 2 1890



Number of Acres outside of Diminished Reserve 917.67 Total number of Acres 1979.41
 Number of Acres within Diminished Reserve 1161 74. Number of Acres of Allotments 1080.32

SURVEYS DESIGNATED	BY WHOM SURVEYED	No.	DATE OF CONTRACT	AMOUNT OF SURVEY			WHEN SURVEYED	BEAR DECLINATION
				Mls.	Chains	Links		
Township Lines Subdivisions Connections	Curran and Toland	Special	May 4 th 1887	10	52	79	Aug 17 to Oct 13, 1887	20° 00' E.
	"	"	"	2	07	08		

The above Map of Township No. 4 North of Range No. 35 East of the Willamette Meridian, Oregon, is strictly conformable to the field Notes of the survey thereof on file in this Office which have been examined and approved
 U. S. Surveyor General's Office.
 Portland Oregon.



June 14th 1890 Douglas W. Taylor.
 Surveyor General of Oregon.