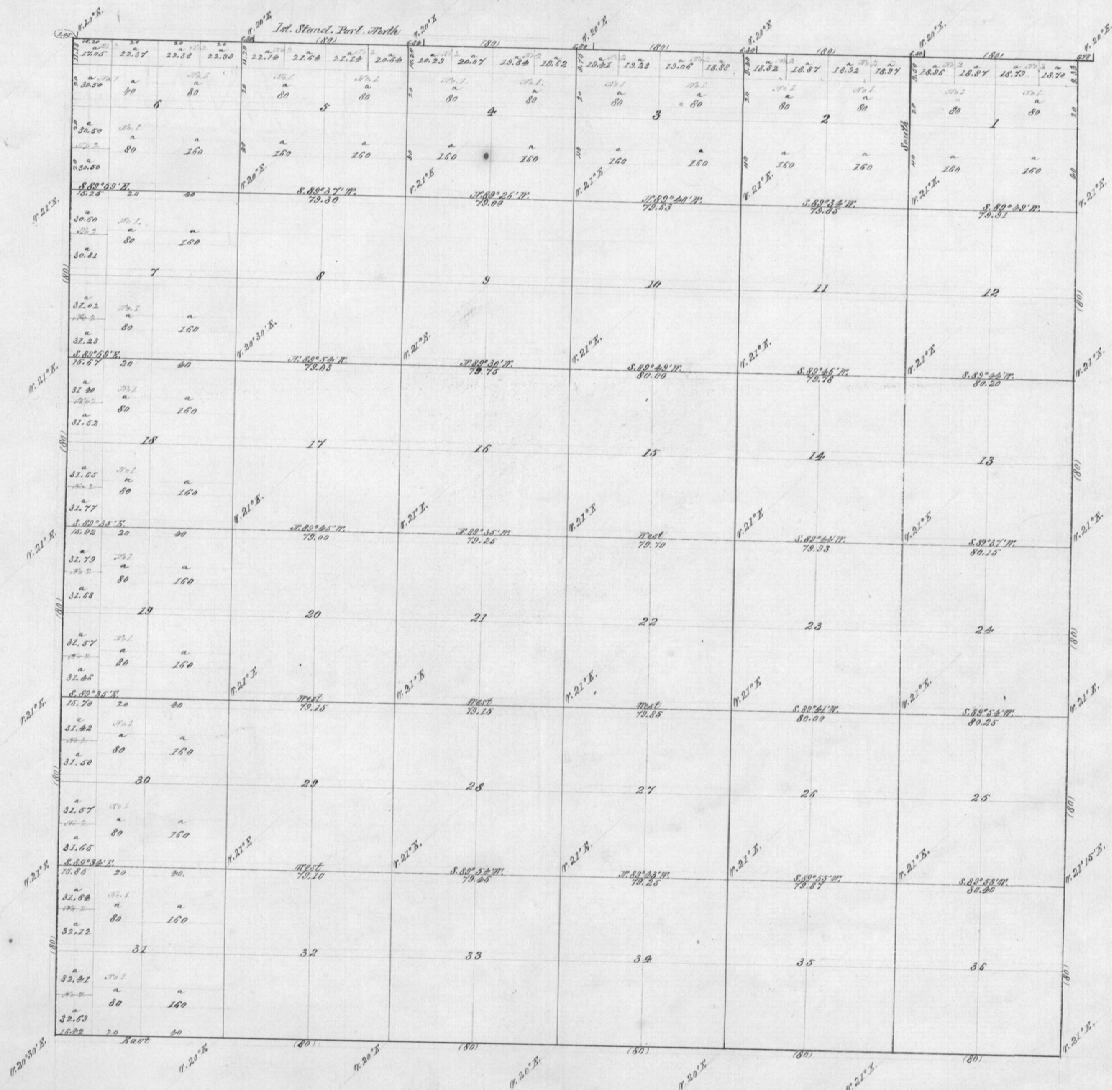


Township No. 4 North, Range No. 33 East Will. Meridian.

4161



Description	Name of Party	Continued		Was. Surveyed.			When Completed.
		Acres	Perches	Acres	Chains	Links	
Subdivisions	Odele & Lewis	110	7,1868	52	78	33	May 2d. 1865.
Total Acres	23360.25						

The above maps of the survey of Subdivisional lines of Twp. 4 N. R. 33 E. Will. Mer. Oregon, is strictly conformable to the field notes of the survey stored on file in this office, which have been examined and approved.
 Surveyor General's Office
 Eugene City, Feb. 10 1866

E. L. Applegate
 Surveyor General