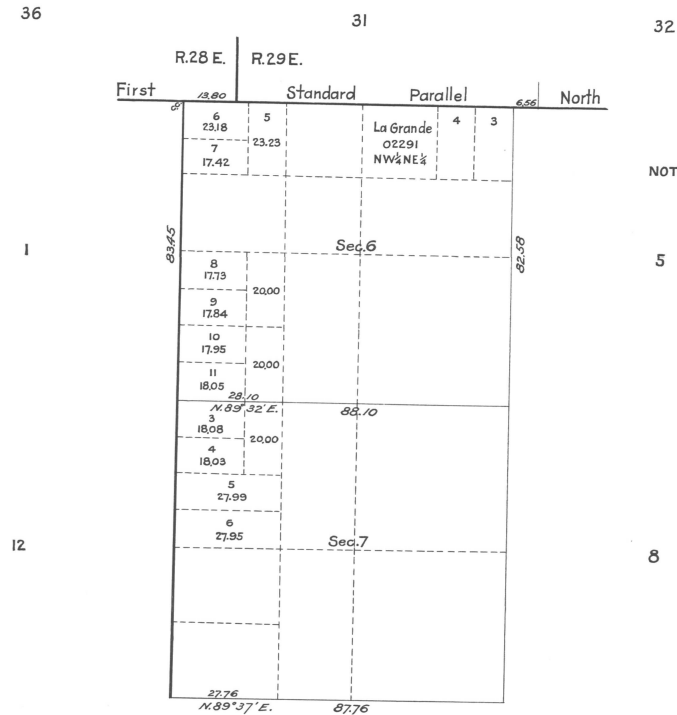


*Supplemental Plat
of
Sections 6 and 7—Township No 4 North, Range No 29 East of the Willamette Meridian, Oregon.
(Superseding plat of said sections approved December 7, 1861)
Scale 20 chains to an inch*



NOTE: For areas of lots 3 & 4, Sec. 6, see plat approved Nov. 15, 1915.

ACCEPTED BY THE HON. COMMISSIONER G. L. O. March 2, 1918

This Supplemental Plat showing the areas and legal subdivisions of old Lots 2, Sections 6 and 7—T. 4 N. R. 29 E., Oregon, is made for the purpose of accommodating certain farm units in the Umatilla Irrigation Project embraced in said old Lots 2, and is prepared in compliance with instructions from the Hon. Asst. Commissioner of the General Land Office contained in letter "E" dated December 20, 1917.

U.S. Surveyor General's Office
Portland, Oregon, January 9, 1918

G. C. W. Worth
Surveyor General of Oregon.