

TOWNSHIP No. 4 NORTH, RANGE No. 29 EAST, OF THE WILLAMETTE MERIDIAN, OREGON.
 SUPPLEMENTAL PLAT OF SECTION 6.

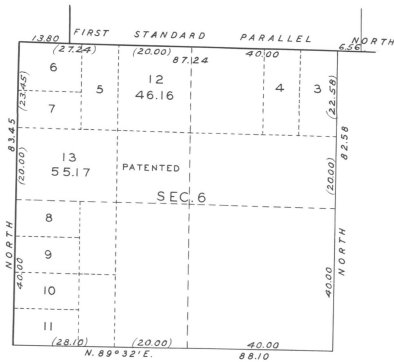
SCALE: 20 CHAINS TO AN INCH.

SEC. 36

SEC. 31

SEC. 1

SEC. 5



SEC. 7

Public Survey Office,
 Portland, Oregon, August 30, 1933.

The above supplemental plat of Section 6, Township No. 4 North, Range No. 29 East, of the Willamette Meridian, Oregon, based upon the plats approved December 7, 1931, November 15, 1915 and January 9, 1918, showing a subdivision of original lots 1 and 2 in the NW $\frac{1}{4}$ of said Section 6, to accommodate entries The halves 023717 and 023805, prepared in accordance with instructions contained in the Commissioner's letter "a" dated August 23, 1933, is hereby approved.

Joseph A. Young,
 Chief Cadastral Engineer.

DEPARTMENT OF THE INTERIOR,
 GENERAL LAND OFFICE,
 Washington, D. C., SEPTEMBER 25, 1933.

The amended lottings represented by this supplemental plat having been correctly made in accordance with the regulations of this office, the plat is hereby accepted.

J. H. Carter,
 ACTING Assistant Commissioner.