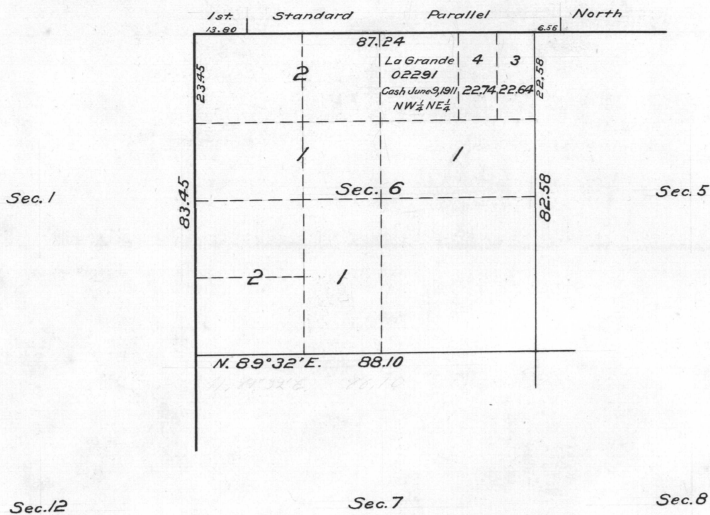


Supplemental Plat
of
Section 6 — T. 4 N. R. 29 E. of the Willamette Meridian Oregon
(Superseding Plat of said section approved December 7, 1861)
Scale 20 chains to an inch.

Sec. 36

Sec. 31

Sec. 32



I hereby certify the above to be a correct supplemental plat of Sec. 6 T. 4 N. R. 29 E. of the Willamette Meridian, Oregon, showing a division of lot 2 in NE 1/4 of said section, prepared in compliance with instructions from the Hon. Commissioner of the General Land Office, contained in letter L. (JAD) dated November 6, 1915, in order to accommodate homestead entry La Grande 09871 made by Arch M. Mathews.

U.S. Surveyor General's Office }
Portland, Oregon, Nov. 15, 1915 }

Edward J. Worth
U.S. Surveyor General
for Oregon

ACCEPTED BY THE HON. COMMISSIONER G. L. O. December 9, 1915